

For Research Use Only

# BCL10 Recombinant antibody, PBS Only (Detector)

Catalog Number: 85858-2-PBS



## Basic Information

Catalog Number:

85858-2-PBS

Concentration:

1 mg/ml

Source:

Rabbit

Isotype:

IgG

Immunogen Catalog Number:

AG12170

GenBank Accession Number:

BC053617

GeneID (NCBI):

8915

UNIPROT ID:

O95999

Full Name:

B-cell CLL/lymphoma 10

Calculated MW:

233 aa, 26 kDa

Observed MW:

30 kDa

Purification Method:

Protein A purification

CloneNo.:

250149A6

## Applications

Tested Applications:

WB, Cytometric bead array, Indirect ELISA

Species Specificity:

human

## Background Information

### Storage

Storage:

Store at -80°C.

The product is shipped with ice packs. Upon receipt, store it immediately at -80°C

Storage Buffer:

PBS only, pH7.3

For technical support and original validation data for this product please contact:

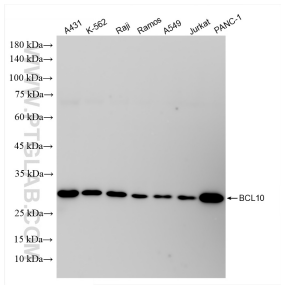
T: 4006900926

E: [Proteintech-CN@ptglab.com](mailto:Proteintech-CN@ptglab.com)

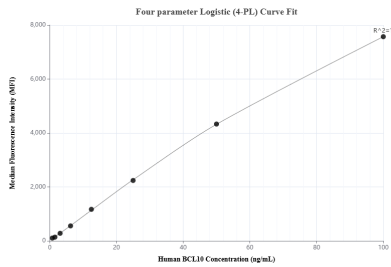
W: [ptgcn.com](http://ptgcn.com)

This product is exclusively available under Proteintech Group brand and is not available to purchase from any other manufacturer.

## Selected Validation Data



Various lysates were subjected to SDS PAGE followed by western blot with 85858-2-RR (BCL10 antibody) at dilution of 1:10000 incubated at room temperature for 1.5 hours. This data was developed using the same antibody clone with 85858-2-PBS in a different storage buffer formulation.



Cytometric bead array standard curve of MP02160-2, BCL10 Recombinant Matched Antibody Pair, PBS Only. Capture antibody: 85858-3-PBS. Detection antibody: 85858-2-PBS. Standard: Ag12170. Range: 0.781-100 ng/mL.