

For Research Use Only

PAEP/Glycodelin Recombinant antibody

Catalog Number: 85856-2-RR



Basic Information

Catalog Number:

85856-2-RR

Concentration:

1000 µg/ml

Source:

Rabbit

Isotype:

IgG

Immunogen Catalog Number:

EG3037

GenBank Accession Number:

NM_002571.4

GeneID (NCBI):

5047

UNIPROT ID:

P09466-1

Full Name:

progesterone-associated endometrial protein

Calculated MW:

21 kDa

Observed MW:

21-25 kDa

Purification Method:

Protein A purification

CloneNo.:

250206H6

Recommended Dilutions:

WB 1:500-1:2000

Applications

Tested Applications:

WB, ELISA

Species Specificity:

human

Positive Controls:

WB : human placenta tissue,

Background Information

Storage

Storage:

Store at -20°C. Stable for one year after shipment.

Storage Buffer:

PBS with 0.02% sodium azide and 50% glycerol, pH7.3

Aliquoting is unnecessary for -20°C storage

For technical support and original validation data for this product please contact:

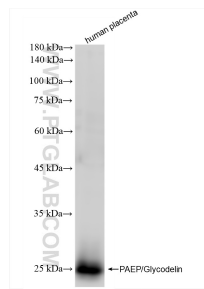
T: 4006900926

E: Proteintech-CN@ptglab.com

W: ptgcn.com

This product is exclusively available under Proteintech Group brand and is not available to purchase from any other manufacturer.

Selected Validation Data



human placenta tissue were subjected to SDS PAGE followed by western blot with 85856-2-RR (PAEP/Glycodelin antibody) at dilution of 1:1000 incubated at room temperature for 1.5 hours.