

For Research Use Only

Nephrin Recombinant antibody

Catalog Number: 85845-1-RR



Basic Information

Catalog Number:

85845-1-RR

Concentration:

1000 µg/ml

Source:

Rabbit

Isotype:

IgG

Immunogen Catalog Number:

AG18994

GenBank Accession Number:

BC156935

GeneID (NCBI):

4868

UNIPROT ID:

O60500

Full Name:

nephrosis 1, congenital, Finnish type
(nephrin)

Calculated MW:

1241 aa, 135 kDa

Observed MW:

120-130 kDa

Purification Method:

Protein A purification

CloneNo.:

250064G12

Recommended Dilutions:

WB: 1:1000-1:4000

Applications

Tested Applications:

WB, ELISA

Species Specificity:

human, mouse

Positive Controls:

WB : mouse kidney tissue,

Background Information

Podocytes are a major component of the glomerular blood filtration barrier. Podocyte protein Nephrin, also known as NPHS1, is the first to be identified as a central component of the slit diaphragm (SD), which is the podocyte cell-cell junction. Mutations in Nephrin lead to congenital nephrosis, such as steroid-resistant proteinuria and congenital nephrotic syndrome of the Finnish type (CNF).

Storage

Storage:

Store at -20°C. Stable for one year after shipment.

Storage Buffer:

PBS with 0.02% sodium azide and 50% glycerol, pH7.3

Aliquoting is unnecessary for -20°C storage

For technical support and original validation data for this product please contact:

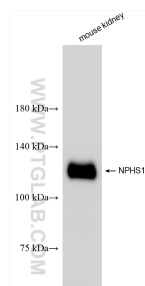
T: 4006900926

E: Proteintech-CN@ptglab.com

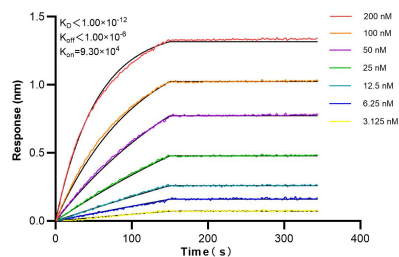
W: ptgcn.com

This product is exclusively available under Proteintech Group brand and is not available to purchase from any other manufacturer.

Selected Validation Data



mouse kidney tissue were subjected to SDS PAGE followed by western blot with 85845-1-RR (Nephrin antibody) at dilution of 1:2000 incubated at room temperature for 1.5 hours.



Biolayer interferometry (BLI) kinetic assays of 85845-1-RR against Human Nephrin were performed. The affinity constant is below 1 pM.