

For Research Use Only

# Nephrin Recombinant antibody, PBS Only

Catalog Number: 85845-1-PBS



## Basic Information

Catalog Number:

85845-1-PBS

Concentration:

1 mg/ml

Source:

Rabbit

Isotype:

IgG

Immunogen Catalog Number:

AG18994

GenBank Accession Number:

BC156935

GeneID (NCBI):

4868

UNIPROT ID:

O60500

Full Name:

nephrosis 1, congenital, Finnish type (nephrin)

Calculated MW:

1241 aa, 135 kDa

Observed MW:

120-130 kDa

Purification Method:

Protein A purification

CloneNo.:

250064G12

## Applications

Tested Applications:

WB, Indirect ELISA

Species Specificity:

human, mouse

## Background Information

Podocytes are a major component of the glomerular blood filtration barrier. Podocyte protein Nephrin, also known as NPHS1, is the first to be identified as a central component of the slit diaphragm (SD), which is the podocyte cell-cell junction. Mutations in Nephrin lead to congenital nephrosis, such as steroid-resistant proteinuria and congenital nephrotic syndrome of the Finnish type (CNF).

## Storage

Storage:

Store at -80°C.

**The product is shipped with ice packs. Upon receipt, store it immediately at -80°C**

Storage Buffer:

PBS only, pH7.3

For technical support and original validation data for this product please contact:

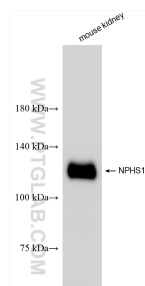
T: 4006900926

E: Proteintech-CN@ptglab.com

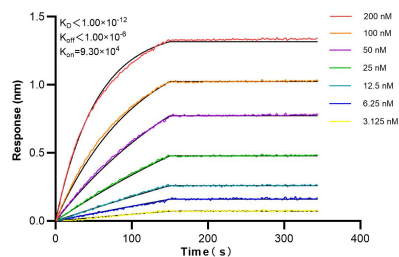
W: ptgcn.com

**This product is exclusively available under Proteintech Group brand and is not available to purchase from any other manufacturer.**

## Selected Validation Data



mouse kidney tissue were subjected to SDS PAGE followed by western blot with 85845-1-RR (Nephrin antibody) at dilution of 1:2000 incubated at room temperature for 1.5 hours. This data was developed using the same antibody clone with 85845-1-PBS in a different storage buffer formulation.



Biolayer interferometry (BLI) kinetic assays of 85845-1-RR against Human Nephrin were performed. The affinity constant is below 1 pM.