

For Research Use Only

Mouse Cd38 Recombinant antibody, PBS Only (Detector)

Catalog Number: 85843-5-PBS



Basic Information

Catalog Number:

85843-5-PBS

Concentration:

1 mg/ml

Source:

Rabbit

Isotype:

IgG

Immunogen Catalog Number:

EG2915

GenBank Accession Number:

NM_007646.5

GeneID (NCBI):

12494

UNIPROT ID:

P56528

Full Name:

CD38 antigen

Calculated MW:

34 kDa

Purification Method:

Protein A purification

CloneNo.:

250107A8

Applications

Tested Applications:

Sandwich ELISA, Indirect ELISA, Sample test

Species Specificity:

mouse

Background Information

Storage

Storage:

Store at -80°C.

The product is shipped with ice packs. Upon receipt, store it immediately at -80°C

Storage Buffer:

PBS only, pH7.3

For technical support and original validation data for this product please contact:

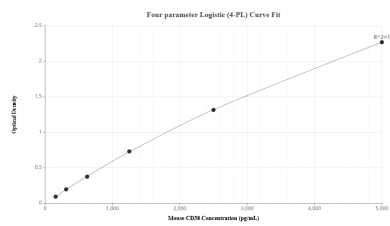
T: 4006900926

E: Proteintech-CN@ptglab.com

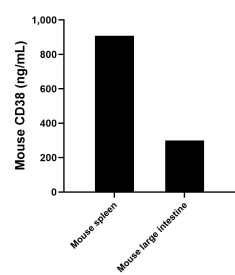
W: ptgcn.com

This product is exclusively available under Proteintech Group brand and is not available to purchase from any other manufacturer.

Selected Validation Data



Sandwich ELISA standard curve of MP02159-3, Mouse CD38 Recombinant Matched Antibody Pair - PBS only. 85843-2-PBS was coated to a plate as the capture antibody and incubated with serial dilutions of standard Eg2915.85843-5-PBS was HRP conjugated as the detection antibody. Range: 156-5000 pg/mL



The mean CD38 concentration was determined to be 907.60 ng/mL in mouse spleen tissue extract based on a 8.4 mg/mL extract load and 299.10 ng/mL in mouse large intestine tissue extract based on a 4.1 mg/mL extract load.