

# Cathepsin B Recombinant monoclonal antibody

Catalog Number: 85841-5-RR

## Basic Information

## Catalog Number:

85841-5-RR

## Source:

Rabbit

## Isotype:

IgG

## Immunogen Catalog Number:

EG3028

## GenBank Accession Number:

NM\_007798.3

## GeneID (NCBI):

13030

## UNIPROT ID:

P10605

## Full Name:

cathepsin B

## Calculated MW:

37 kDa

## Observed MW:

31 kDa, 39 kDa

## Purification Method:

Protein A purification

## CloneNo.:

243020A5

## Recommended Dilutions:

WB: 1:2000-1:10000

IHC: 1:500-1:2000

IF/ICC: 1:500-1:2000

FC (Intra): 0.25 ug per 10<sup>6</sup> cells in a 100 µl suspension

## Applications

## Tested Applications:

WB, IHC, IF/ICC, FC (Intra), ELISA

## Species Specificity:

mouse

**Note-IHC: suggested antigen retrieval with TE buffer pH 9.0; (\*) Alternatively, antigen retrieval may be performed with citrate buffer pH 6.0**

## Positive Controls:

WB: J774A.1 cells, mouse brain tissue, RAW 264.7 cells, mouse liver tissue

IHC: mouse brain tissue,

IF/ICC: RAW 264.7 cells,

FC (Intra): RAW 264.7 cells,

## Background Information

CTSB (Cathepsin B) is also named as CPSB and belongs to the peptidase C1 family. It participates in intracellular degradation and turnover of proteins. Cathepsin B precursors found in human malignant ascites fluid do not possess mannose-rich carbohydrates suggesting that a defect in the post translational processing of carbohydrate moieties on tumor. Cathepsin B exists as both glycosylated and unglycosylated forms (PMID:1637335). In rat macrophages and hepatocytes pro-cathepsin B is 39 kDa (unglycosylated = 35 kDa), whereas in human fibroblasts procathepsin B is 44.5-46 kDa (unglycosylated = 39 kDa) (PMID:2097084). It can be detected the 39 kDa form of pro-CTSB, 31 kDa mature forms in mouse brain by western blot.

## Storage

## Storage:

Store at -20°C. Stable for one year after shipment.

## Storage Buffer:

PBS with 0.02% sodium azide and 50% glycerol, pH7.3

Aliquoting is unnecessary for -20°C storage

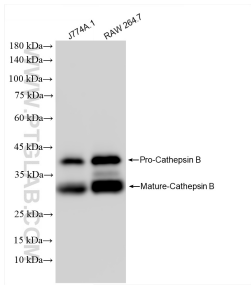
For technical support and original validation data for this product please contact:

T: 4006900926

E: [Proteintech-CN@ptglab.com](mailto:Proteintech-CN@ptglab.com)W: [ptgcn.com](http://ptgcn.com)

This product is exclusively available under Proteintech Group brand and is not available to purchase from any other manufacturer.

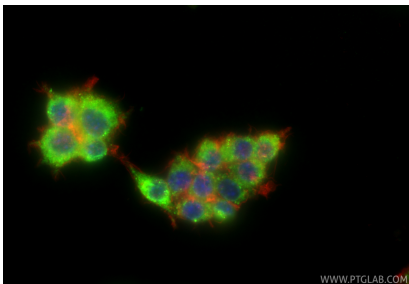
Selected Validation Data



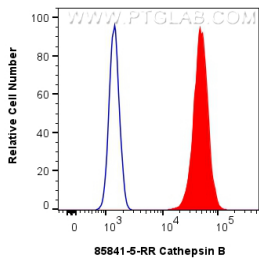
Various lysates were subjected to SDS PAGE followed by western blot with 85841-5-RR (Cathepsin B antibody) at dilution of 1:5000 incubated at room temperature for 1.5 hours.

Immunohistochemical analysis of paraffin-embedded mouse brain tissue slide using 85841-5-RR (Cathepsin B antibody) at dilution of 1:1000 (under 10x lens). Heat mediated antigen retrieval with Tris-EDTA buffer (pH 9.0).

Immunohistochemical analysis of paraffin-embedded mouse brain tissue slide using 85841-5-RR (Cathepsin B antibody) at dilution of 1:1000 (under 40x lens). Heat mediated antigen retrieval with Tris-EDTA buffer (pH 9.0).



Immunofluorescent analysis of (4% PFA) fixed RAW 264.7 cells using Cathepsin B antibody (85841-5-RR, Clone: 243020A5 ) at dilution of 1:1000 and CoraLite® 488-Conjugated Goat Anti-Rabbit IgG(H+L) (SA00013-2), CL594-Phalloidin (red).



1x10<sup>6</sup> RAW 264.7 cells were intracellularly stained with 0.25 ug Cathepsin B Recombinant antibody (85841-5-RR, Clone:243020A5) and CoraLite® 488-Conjugated Goat Anti-Rabbit IgG(H+L) (SA00013-2)(red), or 0.25 ug Rabbit IgG Isotype Control RecAb (98136-1-RR, Clone: 240953C9) (blue). Cells were fixed with 4% PFA and permeabilized with Flow Cytometry Perm Buffer.