

For Research Use Only

RUFY1 Recombinant antibody

Catalog Number: 85839-4-RR



Basic Information

Catalog Number: 85839-4-RR	GenBank Accession Number: BC032571	Purification Method: Protein A purification
Concentration: 1000 µg/ml	GeneID (NCBI): 80230	CloneNo.: 250159A3
Source: Rabbit	UNIPROT ID: Q96T51	Recommended Dilutions: WB: 1:2000-1:10000 IF/ICC: 1:200-1:800
Isotype: IgG	Full Name: RUN and FYVE domain containing 1	
Immunogen Catalog Number: AG4324	Calculated MW: 708 aa, 80 kDa Observed MW: 80 kDa, 69 kDa	

Applications

Tested Applications: WB, IF/ICC, ELISA	Positive Controls:
Species Specificity: human	WB : HeLa cells, Jurkat cells, HepG2 cells, K-562 cells, HEK-293T cells IF/ICC : HEK-293 cells,

Background Information

Rab proteins form the largest group within the Ras superfamily of small GTPases, which acts as molecular switches by cycling between their inactive active GTP-bound and GDP-bound forms [PMID:15520808]. The small GTP-binding protein Rab4 has been involved in the recycling of $\alpha v \beta 3$ integrins in response to platelet-derived growth factor (PDGF) stimulation suggesting a role for Rab4 in cell adhesion and migration [PMID:17001082]. Rabip4 (Rab4 interacting protein), which possesses a RUN domain, two coiled-coil domains and a FYVE finger, was identified as an effector of Rab4, a small GTPase that plays a role in the endocytotic pathway in all cell types [PMID:11172003]. RUFY1 exists three isoforms and molecular weight of isoforms are 80 kDa, 69 kDa and 45 kDa.

Storage

Storage:
Store at -20°C. Stable for one year after shipment.
Storage Buffer:
PBS with 0.02% sodium azide and 50% glycerol, pH7.3
Aliquoting is unnecessary for -20°C storage

For technical support and original validation data for this product please contact:

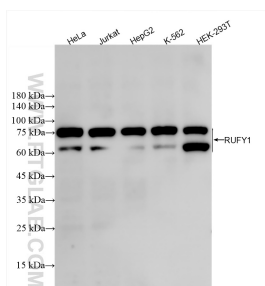
T: 4006900926

E: Proteintech-CN@ptglab.com

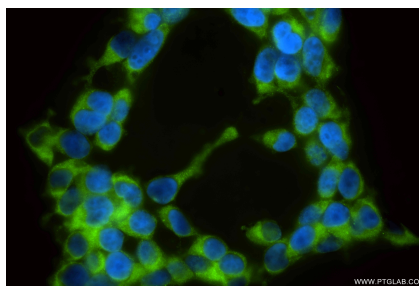
W: ptgcn.com

This product is exclusively available under Proteintech Group brand and is not available to purchase from any other manufacturer.

Selected Validation Data



Various lysates were subjected to SDS PAGE followed by western blot with 85839-4-RR (RUFY1 antibody) at dilution of 1:5000 incubated at room temperature for 1.5 hours.



Immunofluorescent analysis of (-20°C Ethanol) fixed HEK-293 cells using RUFY1 antibody (85839-4-RR, Clone: 250159A3) at dilution of 1:400 and CoraLite® 488-Conjugated Goat Anti-Rabbit IgG(H+L) (SA00013-2).