

For Research Use Only

# Mouse MBL Recombinant antibody, PBS Only (Capture)

Catalog Number: 85835-4-PBS



## Basic Information

Catalog Number:

85835-4-PBS

Concentration:

1 mg/ml

Source:

Rabbit

Isotype:

IgG

Immunogen Catalog Number:

EG3157

GenBank Accession Number:

NM\_010776.1

GeneID (NCBI):

17195

UNIPROT ID:

P41317

Full Name:

mannose-binding lectin (protein C) 2

Calculated MW:

26 kDa

Observed MW:

32 kDa

Purification Method:

Protein A purification

CloneNo.:

250108E11

## Applications

Tested Applications:

WB, Cytometric bead array, Indirect ELISA

Species Specificity:

mouse, rat

## Background Information

### Storage

Storage:

Store at -80°C.

The product is shipped with ice packs. Upon receipt, store it immediately at -80°C

Storage Buffer:

PBS only, pH7.3

For technical support and original validation data for this product please contact:

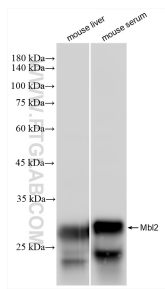
T: 4006900926

E: Proteintech-CN@ptglab.com

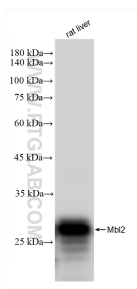
W: ptgcn.com

This product is exclusively available under Proteintech Group brand and is not available to purchase from any other manufacturer.

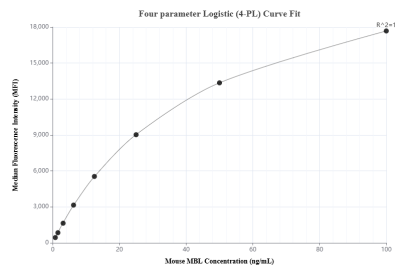
## Selected Validation Data



Various lysates were subjected to SDS PAGE followed by western blot with 85835-4-RR (Mbl2 antibody) at dilution of 1:5000 incubated at room temperature for 1.5 hours. This data was developed using the same antibody clone with 85835-4-PBS in a different storage buffer formulation.



rat liver tissue were subjected to SDS PAGE followed by western blot with 85835-4-RR (Mbl2 antibody) at dilution of 1:5000 incubated at room temperature for 1.5 hours. This data was developed using the same antibody clone with 85835-4-PBS in a different storage buffer formulation.



Cytometric bead array standard curve of MP02145-1, MOUSE MBL Recombinant Matched Antibody Pair, PBS Only. Capture antibody: 85835-4-PBS. Detection antibody: 85835-3-PBS. Standard: Eg3157. Range: 0.781-100 ng/mL.