

For Research Use Only

CLIC1 Recombinant antibody, PBS Only (Capture)

Catalog Number: 85831-5-PBS



Basic Information

Catalog Number:

85831-5-PBS

Concentration:

1 mg/ml

Source:

Rabbit

Isotype:

IgG

Immunogen Catalog Number:

AG6049

GenBank Accession Number:

BC064527

GeneID (NCBI):

1192

UNIPROT ID:

O00299

Full Name:

chloride intracellular channel 1

Calculated MW:

27 kDa

Purification Method:

Protein A purification

CloneNo.:

250143D10

Applications

Tested Applications:

Sandwich ELISA, Indirect ELISA, Sample test

Species Specificity:

human

Background Information

Storage

Storage:

Store at -80°C.

The product is shipped with ice packs. Upon receipt, store it immediately at -80°C

Storage Buffer:

PBS only, pH7.3

For technical support and original validation data for this product please contact:

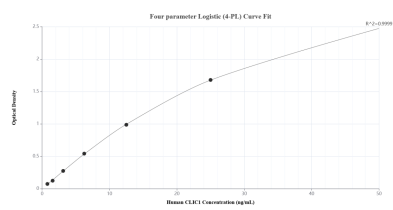
T: 4006900926

E: Proteintech-CN@ptglab.com

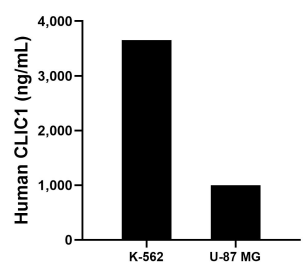
W: ptgcn.com

This product is exclusively available under Proteintech Group brand and is not available to purchase from any other manufacturer.

Selected Validation Data



Sandwich ELISA standard curve of MP02147-3, Human CLIC1 Recombinant Matched Antibody Pair - PBS only. 85831-5-PBS was coated to a plate as the capture antibody and incubated with serial dilutions of standard Ag6049. 85831-2-PBS was HRP conjugated as the detection antibody. Range: 0.781-50 ng/mL



The mean CLIC1 concentration was determined to be 3,651.74 ng/mL in K-562 cell extract based on a 2.40 mg/mL extract load and 998.13 ng/mL in U-87 MG cell extract based on a 2.00 mg/mL extract load.