

CLIC1 Recombinant antibody

Catalog Number: 85831-4-RR

Basic Information

Catalog Number: 85831-4-RR	GenBank Accession Number: BC064527	Purification Method: Protein A purification
Concentration: 1000 µg/ml	GeneID (NCBI): 1192	CloneNo.: 250143E11
Source: Rabbit	UNIPROT ID: O00299	Recommended Dilutions: WB: 1:5000-1:50000 IHC: 1:500-1:2000 IF/ICC: 1:200-1:800
Isotype: IgG	Full Name: chloride intracellular channel 1	
Immunogen Catalog Number: AG6049	Calculated MW: 27 kDa Observed MW: 27-32 kDa	

Applications

Tested Applications:
WB, IHC, IF/ICC, ELISA

Species Specificity:
human, mouse, rat

**Note-IHC: suggested antigen retrieval with
TE buffer pH 9.0; (*) Alternatively, antigen
retrieval may be performed with citrate
buffer pH 6.0**

Positive Controls:

WB : HeLa cells, rat spleen tissue, HL-60 cells, C2C12 cells, RAW 264.7 cells, C6 cells, mouse spleen tissue

IHC : mouse kidney tissue, rat spleen tissue

IF/ICC : HeLa cells,

Background Information

Chloride intracellular channel protein 1 (CLIC1) is a member of the chloride intracellular channel protein family. It plays a crucial role in various cellular processes, including the regulation of chloride ion transport, cell viability, and mitochondrial function. CLIC1 is involved in the formation of membrane-inserted channels that facilitate chloride ion movement, which is essential for maintaining cellular homeostasis and function (PMID: 32116799). Additionally, CLIC1 has been implicated in cancer progression, where it influences cell proliferation, migration, and invasion (PMID: 38027011).

Storage

Storage:
Store at -20°C. Stable for one year after shipment.
Storage Buffer:
PBS with 0.02% sodium azide and 50% glycerol, pH7.3
Aliquoting is unnecessary for -20°C storage

For technical support and original validation data for this product please contact:

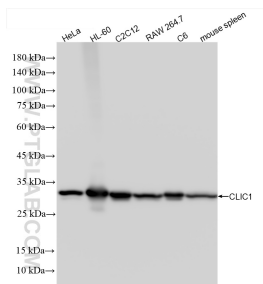
T: 4006900926

E: Proteintech-CN@ptglab.com

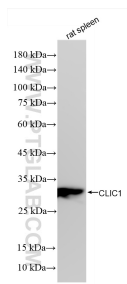
W: ptgcn.com

This product is exclusively available under Proteintech Group brand and is not available to purchase from any other manufacturer.

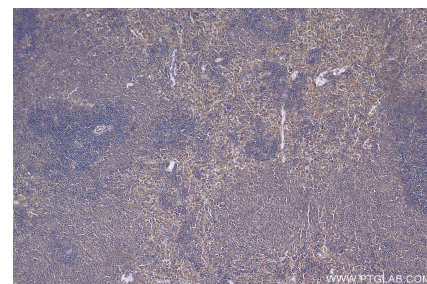
Selected Validation Data



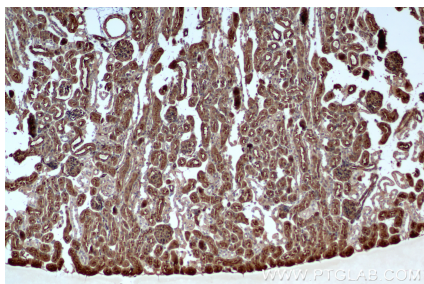
Various lysates were subjected to SDS PAGE followed by western blot with 85831-4-RR (CLIC1 antibody) at dilution of 1:10000 incubated at room temperature for 1.5 hours.



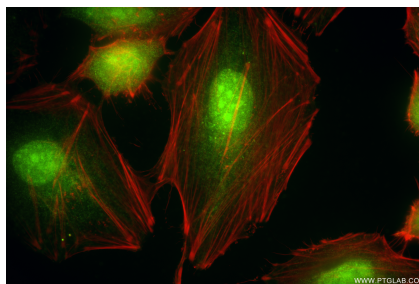
Various lysates were subjected to SDS PAGE followed by western blot with 85831-4-RR (CLIC1 antibody) at dilution of 1:10000 incubated at room temperature for 1.5 hours.



Immunohistochemical analysis of paraffin-embedded rat spleen tissue slide using 85831-4-RR (CLIC1 antibody) at dilution of 1:800 (under 10x lens). Heat mediated antigen retrieval with Tris-EDTA buffer (pH 9.0).



Immunohistochemical analysis of paraffin-embedded mouse kidney tissue slide using 85831-4-RR (CLIC1 antibody) at dilution of 1:1000 (under 10x lens). Heat mediated antigen retrieval with Tris-EDTA buffer (pH 9.0).



Immunofluorescent analysis of (4% PFA) fixed HeLa cells using CLIC1 antibody (85831-4-RR, Clone: 250143E11) at dilution of 1:400 and Coralite® 488-Conjugated Goat Anti-Rabbit IgG(H+L) (SA00013-2), CL594-Phalloidin (red).