

For Research Use Only

# CLIC1 Recombinant antibody, PBS Only

Catalog Number: 85831-4-PBS



## Basic Information

Catalog Number: 85831-4-PBS	GenBank Accession Number: BC064527	Purification Method: Protein A purification
Concentration: 1 mg/ml	GeneID (NCBI): 1192	CloneNo.: 250143E11
Source: Rabbit	UNIPROT ID: O00299	
Isotype: IgG	Full Name: chloride intracellular channel 1	
Immunogen Catalog Number: AG6049	Calculated MW: 27 kDa	
	Observed MW: 27-32 kDa	

## Applications

**Tested Applications:**  
WB, IHC, IF/ICC, Indirect ELISA

**Species Specificity:**  
human, mouse, rat

## Background Information

Chloride intracellular channel protein 1 (CLIC1) is a member of the chloride intracellular channel protein family. It plays a crucial role in various cellular processes, including the regulation of chloride ion transport, cell viability, and mitochondrial function. CLIC1 is involved in the formation of membrane-inserted channels that facilitate chloride ion movement, which is essential for maintaining cellular homeostasis and function (PMID: 32116799). Additionally, CLIC1 has been implicated in cancer progression, where it influences cell proliferation, migration, and invasion (PMID: 38027011).

## Storage

**Storage:**  
Store at -80°C.  
**The product is shipped with ice packs. Upon receipt, store it immediately at -80°C**

**Storage Buffer:**  
PBS only, pH7.3

For technical support and original validation data for this product please contact:

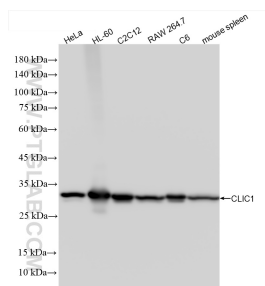
T: 4006900926

E: Proteintech-CN@ptglab.com

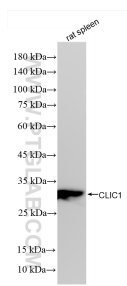
W: ptgcn.com

**This product is exclusively available under Proteintech Group brand and is not available to purchase from any other manufacturer.**

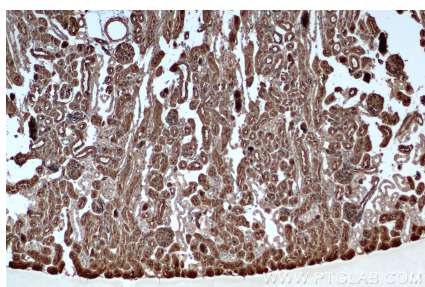
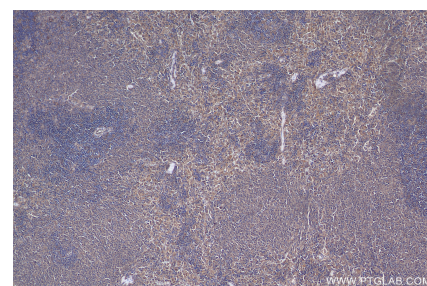
## Selected Validation Data



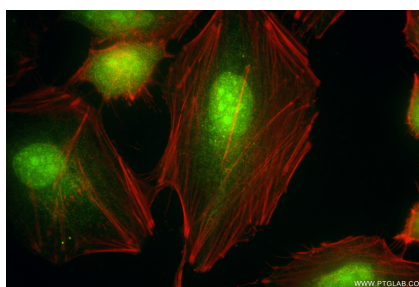
Various lysates were subjected to SDS PAGE followed by western blot with 85831-4-RR (CLIC1 antibody) at dilution of 1:10000 incubated at room temperature for 1.5 hours. This data was developed using the same antibody clone with 85831-4-PBS in a different storage buffer formulation.



Various lysates were subjected to SDS PAGE followed by western blot with 85831-4-RR (CLIC1 antibody) at dilution of 1:10000 incubated at room temperature for 1.5 hours. This data was developed using the same antibody clone with 85831-4-PBS in a different storage buffer formulation.



Immunohistochemical analysis of paraffin-embedded mouse kidney tissue slide using 85831-4-RR (CLIC1 antibody) at dilution of 1:1000 (under 10x lens). Heat mediated antigen retrieval with Tris-EDTA buffer (pH 9.0). This data was developed using the same antibody clone with 85831-4-PBS in a different storage buffer formulation.



Immunofluorescent analysis of (4% PFA) fixed HeLa cells using CLIC1 antibody (85831-4-RR, Clone: 250143E11) at dilution of 1:400 and Coralite® 488-Conjugated Goat Anti-Rabbit IgG(H+L) (SA00013-2), CL594-Phalloidin (red). This data was developed using the same antibody clone with 85831-4-PBS in a different storage buffer formulation.