

For Research Use Only

C6orf15 Recombinant antibody, PBS Only (Detector)

Catalog Number: 85830-1-PBS



Basic Information

Catalog Number: 85830-1-PBS	GenBank Accession Number: BC153157	Purification Method: Protein A purification
Concentration: 1 mg/ml	GeneID (NCBI): 29113	CloneNo.: 250126F4
Source: Rabbit	UNIPROT ID: Q6UXA7	
Isotype: IgG	Full Name: chromosome 6 open reading frame 15	
Immunogen Catalog Number: AG20276	Calculated MW: 325 aa, 34 kDa	
	Observed MW: 55 kDa	

Applications

Tested Applications:
WB, Cytometric bead array, Indirect ELISA

Species Specificity:
human

Background Information

C6orf15, also named as Protein STG, is a 325 amino acid protein, which as a secreted protein is expressed in skin and tonsils. The calculated molecular weight of C6orf15 is 34 kDa, but we detected a 50-55 kDa protein by western blot. C6orf15 may contains some modified residues.

Storage

Storage:
Store at -80°C.
The product is shipped with ice packs. Upon receipt, store it immediately at -80°C

Storage Buffer:
PBS only, pH7.3

For technical support and original validation data for this product please contact:

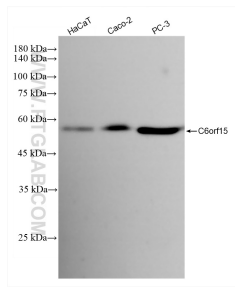
T: 4006900926

E: Proteintech-CN@ptglab.com

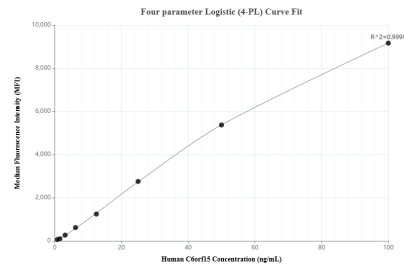
W: ptgcn.com

This product is exclusively available under Proteintech Group brand and is not available to purchase from any other manufacturer.

Selected Validation Data



Various lysates were subjected to SDS PAGE followed by western blot with 85830-1-RR (C6orf15 antibody) at dilution of 1:2000 incubated at room temperature for 1.5 hours. This data was developed using the same antibody clone with 85830-1-PBS in a different storage buffer formulation.



Cytometric bead array standard curve of MP02146-2, C6orf15 Recombinant Matched Antibody Pair, PBS Only. Capture antibody: 85830-2-PBS. Detection antibody: 85830-1-PBS. Standard: Ag20276. Range: 0.781-100 ng/mL.