

For Research Use Only

Ctf1 Recombinant antibody

Catalog Number: 85828-4-RR



Basic Information

Catalog Number:

85828-4-RR

Concentration:

1000 μ g/ml

Source:

Rabbit

Isotype:

IgG

Immunogen Catalog Number:

EG2867

GenBank Accession Number:

NM_007795.1

GeneID (NCBI):

13019

UNIPROT ID:

Q60753

Full Name:

cardiotrophin 1

Calculated MW:

22 kDa

Observed MW:

22 kDa

Purification Method:

Protein A purification

CloneNo.:

242890C10

Recommended Dilutions:

WB 1:500-1:2000

Applications

Tested Applications:

WB, ELISA

Species Specificity:

mouse, rat

Positive Controls:

WB : mouse liver tissue, rat liver tissue, mouse lung tissue, mouse uterus tissue

Background Information

CTF1 (Cardiotrophin-1) is a member of the interleukin-6 (IL-6) family of cytokines. It is a secreted protein that induces cardiac myocyte hypertrophy in vitro and has been shown to bind and activate the IL-6ST/gp130 receptor. CTF1 plays a crucial role in various physiological and pathological processes, including cardiac function, metabolism, and cancer progression.

Storage

Storage:

Store at -20°C. Stable for one year after shipment.

Storage Buffer:

PBS with 0.02% sodium azide and 50% glycerol, pH7.3

Aliquoting is unnecessary for -20°C storage

For technical support and original validation data for this product please contact:

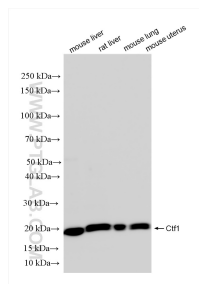
T: 4006900926

E: Proteintech-CN@ptglab.com

W: ptgcn.com

This product is exclusively available under Proteintech Group brand and is not available to purchase from any other manufacturer.

Selected Validation Data



Various lysates were subjected to SDS PAGE followed by western blot with 85828-4-RR (Ctf1 antibody) at dilution of 1:1000 incubated at room temperature for 1.5 hours.