

For Research Use Only

CRIP2 Recombinant antibody

Catalog Number: 85826-4-RR



Basic Information

Catalog Number:

85826-4-RR

Concentration:

1000 μ g/ml

Source:

Rabbit

Isotype:

IgG

Immunogen Catalog Number:

AG6515

GenBank Accession Number:

BC000434

GeneID (NCBI):

1397

UNIPROT ID:

P52943

Full Name:

cysteine-rich protein 2

Calculated MW:

22 kDa

Observed MW:

22 kDa

Purification Method:

Protein A purification

CloneNo.:

250090G11

Recommended Dilutions:

WB 1:5000-1:50000

Applications

Tested Applications:

WB, ELISA

Species Specificity:

human, mouse

Positive Controls:

WB : HeLa cells, MCF-7 cells, mouse heart tissue, mouse brain tissue

Background Information

CRIP2, also known as CRP2 and ESP1, belongs to the cysteine-rich intestinal protein family (CRIP family). The CRIP family is a subfamily of the highly conserved Lin-1, Isl1, Mec3/double zinc finger protein family that exhibits diverse biological functions. CRIP2 is a cardiac vascular marker, and its expression is detected in cardiac endothelial cells during development and in the adult heart (PMID: 40118853).

Storage

Storage:

Store at -20°C. Stable for one year after shipment.

Storage Buffer:

PBS with 0.02% sodium azide and 50% glycerol, pH7.3

Aliquoting is unnecessary for -20°C storage

For technical support and original validation data for this product please contact:

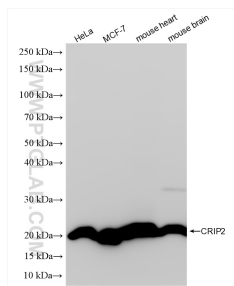
T: 4006900926

E: Proteintech-CN@ptglab.com

W: ptgcn.com

This product is exclusively available under Proteintech Group brand and is not available to purchase from any other manufacturer.

Selected Validation Data



Various lysates were subjected to SDS PAGE followed by western blot with 85826-4-RR (CRIP2 antibody) at dilution of 1:10000 incubated at room temperature for 1.5 hours.