

For Research Use Only

# CRIP2 Recombinant antibody, PBS Only

Catalog Number: 85826-4-PBS



## Basic Information

Catalog Number:

85826-4-PBS

Concentration:

1 mg/ml

Source:

Rabbit

Isotype:

IgG

Immunogen Catalog Number:

AG6515

GenBank Accession Number:

BC000434

GeneID (NCBI):

1397

UNIPROT ID:

P52943

Full Name:

cysteine-rich protein 2

Calculated MW:

22 kDa

Observed MW:

22 kDa

Purification Method:

Protein A purification

CloneNo.:

250090G11

## Applications

Tested Applications:

WB, Indirect ELISA

Species Specificity:

human, mouse

## Background Information

CRIP2, also known as CRP2 and ESP1, belongs to the cysteine-rich intestinal protein family (CRIP family). The CRIP family is a subfamily of the highly conserved Lin-1, Isl1, Mec3/double zinc finger protein family that exhibits diverse biological functions. CRIP2 is a cardiac vascular marker, and its expression is detected in cardiac endothelial cells during development and in the adult heart (PMID: 40118853).

## Storage

Storage:

Store at -80°C.

**The product is shipped with ice packs. Upon receipt, store it immediately at -80°C**

Storage Buffer:

PBS only, pH7.3

For technical support and original validation data for this product please contact:

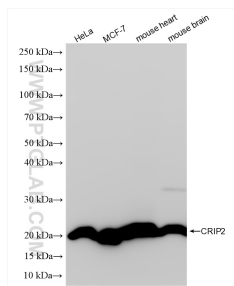
T: 4006900926

E: Proteintech-CN@ptglab.com

W: ptgcn.com

**This product is exclusively available under Proteintech Group brand and is not available to purchase from any other manufacturer.**

## Selected Validation Data



Various lysates were subjected to SDS PAGE followed by western blot with 85826-4-RR (CRIP2 antibody) at dilution of 1:10000 incubated at room temperature for 1.5 hours. This data was developed using the same antibody clone with 85826-4-PBS in a different storage buffer formulation.