

For Research Use Only

# PVALB Recombinant antibody, PBS Only (Capture)

Catalog Number: 85819-3-PBS



## Basic Information

Catalog Number:

85819-3-PBS

Concentration:

1 mg/ml

Source:

Rabbit

Isotype:

IgG

Immunogen Catalog Number:

AG30189

GenBank Accession Number:

NM\_002854

GeneID (NCBI):

5816

UNIPROT ID:

P20472

Full Name:

parvalbumin

Calculated MW:

12 kDa

Purification Method:

Protein A purification

CloneNo.:

250158A11

## Applications

Tested Applications:

Cytometric bead array, Sandwich ELISA, Indirect ELISA,  
Sample test

Species Specificity:

human

## Background Information

### Storage

Storage:

Store at -80°C.

**The product is shipped with ice packs. Upon receipt, store it immediately at -80°C**

Storage Buffer:

PBS only, pH7.3

For technical support and original validation data for this product please contact:

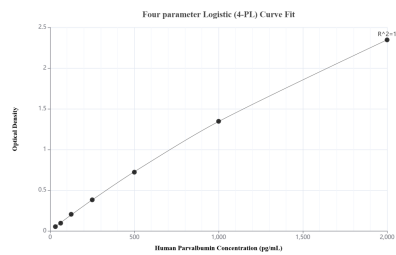
T: 4006900926

E: [Proteintech-CN@ptglab.com](mailto:Proteintech-CN@ptglab.com)

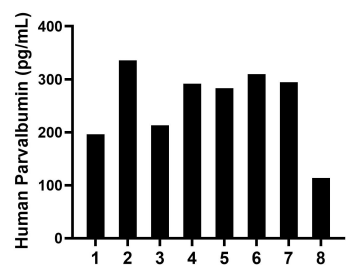
W: [ptgcn.com](http://ptgcn.com)

**This product is exclusively available under Proteintech Group brand and is not available to purchase from any other manufacturer.**

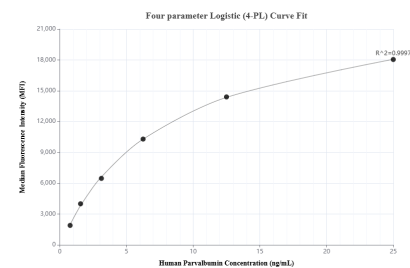
## Selected Validation Data



Sandwich ELISA standard curve of MP02167-1, Human Parvalbumin Recombinant Matched Antibody Pair - PBS only. 85819-3-PBS was coated to a plate as the capture antibody and incubated with serial dilutions of standard Ag30189. 85819-2-PBS was HRP conjugated as the detection antibody. Range: 31.25-2000 pg/mL



Serum of eight individual healthy human donors was measured. The Parvalbumin concentration of detected samples was determined to be 254.8 pg/mL with a range of 113.7-335.8 pg/mL



Cytometric bead array standard curve of MP02167-1, Parvalbumin Recombinant Matched Antibody Pair, PBS Only. Capture antibody: 85819-3-PBS. Detection antibody: 85819-2-PBS. Standard: Ag30189. Range: 0.781-25 ng/mL