

For Research Use Only

PVALB Recombinant antibody, PBS Only (Detector)

Catalog Number: 85819-2-PBS



Basic Information

Catalog Number:

85819-2-PBS

Concentration:

1 mg/ml

Source:

Rabbit

Isotype:

IgG

Immunogen Catalog Number:

AG30189

GenBank Accession Number:

NM_002854

GeneID (NCBI):

5816

UNIPROT ID:

P20472

Full Name:

parvalbumin

Calculated MW:

12 kDa

Purification Method:

Protein A purification

CloneNo.:

250158B10

Applications

Tested Applications:

Cytometric bead array, Sandwich ELISA, Indirect ELISA, Sample test

Species Specificity:

human

Background Information

Storage

Storage:

Store at -80°C.

The product is shipped with ice packs. Upon receipt, store it immediately at -80°C

Storage Buffer:

PBS only, pH7.3

For technical support and original validation data for this product please contact:

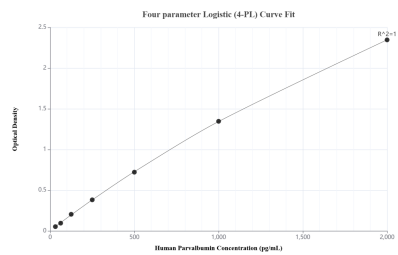
T: 4006900926

E: Proteintech-CN@ptglab.com

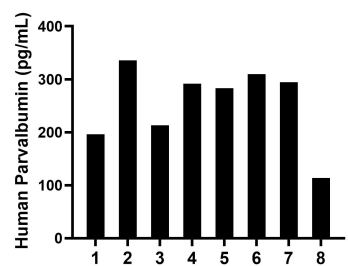
W: ptgcn.com

This product is exclusively available under Proteintech Group brand and is not available to purchase from any other manufacturer.

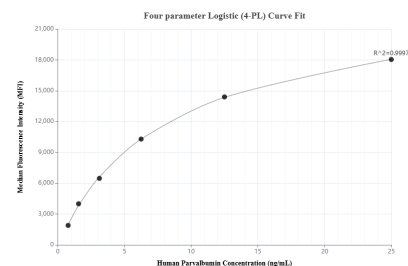
Selected Validation Data



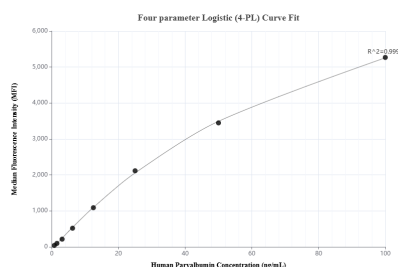
Sandwich ELISA standard curve of MP02167-1, Human Parvalbumin Recombinant Matched Antibody Pair - PBS only. 85819-3-PBS was coated to a plate as the capture antibody and incubated with serial dilutions of standard Ag30189. 85819-2-PBS was HRP conjugated as the detection antibody. Range: 31.25-2000 pg/mL



Serum of eight individual healthy human donors was measured. The Parvalbumin concentration of detected samples was determined to be 254.8 pg/mL with a range of 113.7-335.8 pg/mL



Cytometric bead array standard curve of MP02167-1, Parvalbumin Recombinant Matched Antibody Pair, PBS Only. Capture antibody: 85819-3-PBS. Detection antibody: 85819-2-PBS. Standard: Ag30189. Range: 0.781-25 ng/mL



Cytometric bead array standard curve of MP02167-2, Parvalbumin Recombinant Matched Antibody Pair, PBS Only. Capture antibody: 85819-1-PBS. Detection antibody: 85819-2-PBS. Standard: Ag30189. Range: 0.781-100 ng/mL