

For Research Use Only

# MOV10 Recombinant antibody, PBS Only (Detector)

Catalog Number: 85818-1-PBS



## Basic Information

Catalog Number:

85818-1-PBS

Concentration:

1 mg/ml

Source:

Rabbit

Isotype:

IgG

Immunogen Catalog Number:

AG0384

GenBank Accession Number:

BC002548

GeneID (NCBI):

4343

UNIPROT ID:

Q9HCE1

Full Name:

Mov10, Moloney leukemia virus 10, homolog (mouse)

Calculated MW:

114 kDa

Purification Method:

Protein A purification

CloneNo.:

250130A4

## Applications

Tested Applications:

Cytometric bead array, Sandwich ELISA, Indirect ELISA, Sample test

Species Specificity:

human

## Background Information

### Storage

Storage:

Store at -80°C.

The product is shipped with ice packs. Upon receipt, store it immediately at -80°C

Storage Buffer:

PBS only, pH7.3

For technical support and original validation data for this product please contact:

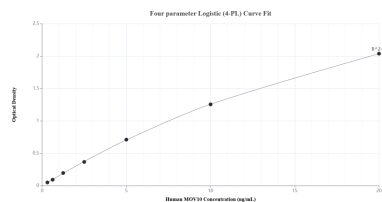
T: 4006900926

E: [Proteintech-CN@ptglab.com](mailto:Proteintech-CN@ptglab.com)

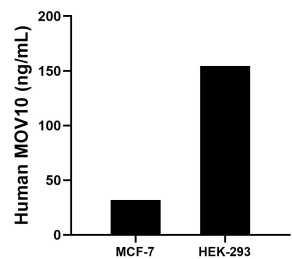
W: [ptgcn.com](http://ptgcn.com)

This product is exclusively available under Proteintech Group brand and is not available to purchase from any other manufacturer.

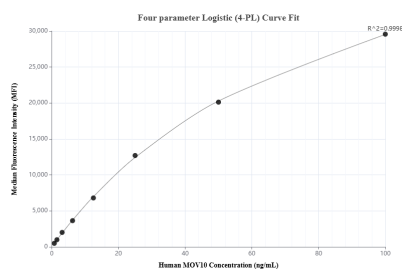
## Selected Validation Data



Sandwich ELISA standard curve of MP02162-1, Human MOV10 Recombinant Matched Antibody Pair - PBS only. 85818-3-PBS was coated to a plate as the capture antibody and incubated with serial dilutions of standard Ag0384. 85818-1-PBS was HRP conjugated as the detection antibody. Range: 0.313-20 ng/mL



The mean MOV10 concentration was determined to be 31.80 ng/mL in MCF-7 cell extract based on a 1.20 mg/mL extract load and 154.30 ng/mL in HEK-293 cell extract based on a 2.20 mg/mL extract load.



Cytometric bead array standard curve of MP02162-1, MOV10 Recombinant Matched Antibody Pair, PBS Only. Capture antibody: 85818-3-PBS. Detection antibody: 85818-1-PBS. Standard: Ag0384. Range: 0.781-100 ng/mL