

For Research Use Only

Rat Beta-2 microglobulin Recombinant monoclonal antibody, PBS Only (Capture)

Catalog Number: 85816-2-PBS



Basic Information

Catalog Number: 85816-2-PBS	GenBank Accession Number: NM_012512.2	Purification Method: Protein A purification
Source: Rabbit	GeneID (NCBI): 24223	CloneNo.: 250092E1
Isotype: IgG	UNIPROT ID: P07151	
Immunogen Catalog Number: EG3270	Full Name: beta-2 microglobulin	
	Calculated MW: 14 kDa	

Applications

Tested Applications:
Sandwich ELISA, Indirect ELISA

Species Specificity:
rat

Background Information

Storage

Storage:
Store at -80°C.
The product is shipped with ice packs. Upon receipt, store it immediately at -80°C

Storage Buffer:
PBS only, pH7.3

For technical support and original validation data for this product please contact:

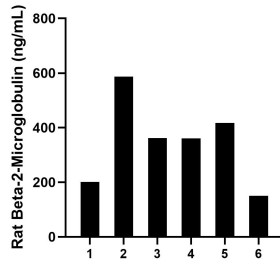
T: 4006900926

E: Proteintech-CN@ptglab.com

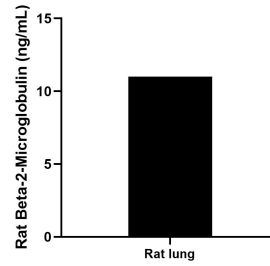
W: ptgcn.com

This product is exclusively available under Proteintech Group brand and is not available to purchase from any other manufacturer.

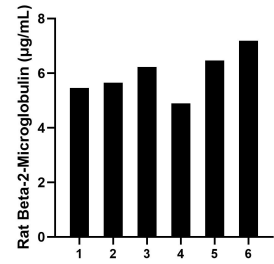
Selected Validation Data



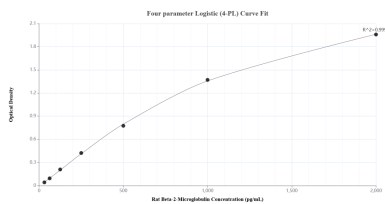
Urine of six rats was measured. The Beta-2-Microglobulin concentration of detected samples was determined to be 346.3 ng/mL with a range of 149.9-587.3 ng/mL.



Rat lungs were rinsed with enough PBS to cover the organs and kept on ice. Tissue was homogenized with a tissue homogenizer and cultured in RPMI 1640 supplemented with 10% fetal bovine serum, 2 mM L-glutamine, 100 U/mL penicillin, and 100 mg/mL streptomycin sulfate. Aliquots of the cell culture supernatants were removed and assayed for Beta-2-Microglobulin, and measured 11.0 ng/mL.



Serum of six rats was measured. The Beta-2-Microglobulin concentration of detected samples was determined to be 6.0 µg/mL with a range of 4.9-7.2 µg/mL.



Sandwich ELISA standard curve of MPO2168-3, Rat Beta-2-Microglobulin Recombinant Matched Antibody Pair - PBS only. 85816-2-PBS was coated to a plate as the capture antibody and incubated with serial dilutions of standard Eg3270. 85816-3-PBS was HRP conjugated as the detection antibody. Range: 31.3-2000 pg/mL.