

For Research Use Only

# Mouse Esm1 Recombinant antibody, PBS Only (Capture)

Catalog Number: 85814-3-PBS



## Basic Information

Catalog Number:

85814-3-PBS

Concentration:

1 mg/ml

Source:

Rabbit

Isotype:

IgG

Immunogen Catalog Number:

EG2784

GenBank Accession Number:

NM\_023612.3

GeneID (NCBI):

71690

UNIPROT ID:

Q9QYY7

Full Name:

endothelial cell-specific molecule 1

Calculated MW:

20 kDa

Purification Method:

Protein A purification

CloneNo.:

242968H1

## Applications

Tested Applications:

Cytometric bead array, Sandwich ELISA, Indirect ELISA,  
Sample test

Species Specificity:

mouse

## Background Information

### Storage

Storage:

Store at -80°C.

**The product is shipped with ice packs. Upon receipt, store it immediately at -80°C**

Storage Buffer:

PBS only, pH7.3

For technical support and original validation data for this product please contact:

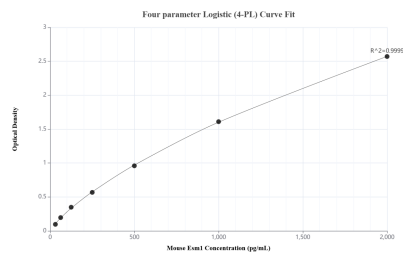
T: 4006900926

E: [Proteintech-CN@ptglab.com](mailto:Proteintech-CN@ptglab.com)

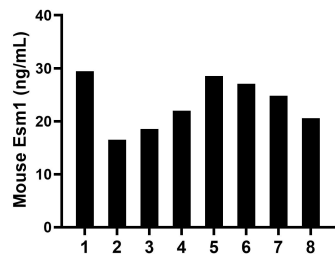
W: [ptgcn.com](http://ptgcn.com)

**This product is exclusively available under Proteintech Group brand and is not available to purchase from any other manufacturer.**

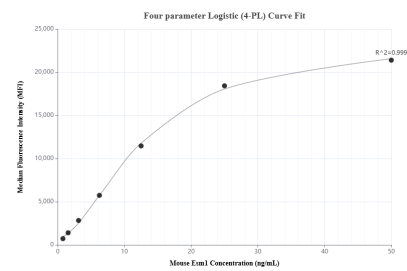
## Selected Validation Data



Sandwich ELISA standard curve of MP02164-1, Mouse Esm1 Recombinant Matched Antibody Pair - PBS only. 85814-3-PBS was coated to a plate as the capture antibody and incubated with serial dilutions of standard Eg2784. 85814-2-PBS was HRP conjugated as the detection antibody. Range: 31.25-2000 pg/mL



Serum of eight mice was measured. The Esm1 concentration of detected samples was determined to be 23.4 ng/mL with a range of 16.5-29.5 ng/mL.



Cytometric bead array standard curve of MP02164-1, MOUSE Esm1 Recombinant Matched Antibody Pair, PBS Only. Capture antibody: 85814-3-PBS. Detection antibody: 85814-2-PBS. Standard: Eg2784. Range: 0.781-50 ng/mL