

For Research Use Only

# Mouse Esm1 Recombinant antibody, PBS Only (Capture/Detector)

Catalog Number: 85814-2-PBS



## Basic Information

Catalog Number: 85814-2-PBS	GenBank Accession Number: NM_023612.3	Purification Method: Protein A purification
Concentration: 1 mg/ml	GeneID (NCBI): 71690	CloneNo.: 242968A5
Source: Rabbit	UNIPROT ID: Q9QYY7	
Isotype: IgG	Full Name: endothelial cell-specific molecule 1	
Immunogen Catalog Number: EG2784	Calculated MW: 20 kDa	

## Applications

**Tested Applications:**  
Cytometric bead array, Sandwich ELISA, Indirect ELISA,  
Sample test

**Species Specificity:**  
mouse

## Background Information

### Storage

**Storage:**  
Store at -80°C.  
**The product is shipped with ice packs. Upon receipt, store it immediately at -80°C**

**Storage Buffer:**  
PBS only, pH7.3

For technical support and original validation data for this product please contact:

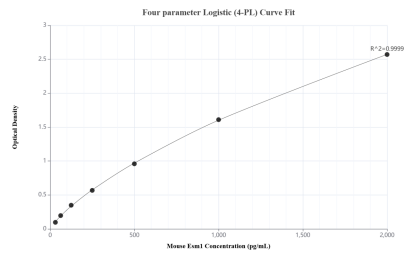
T: 4006900926

E: [Proteintech-CN@ptglab.com](mailto:Proteintech-CN@ptglab.com)

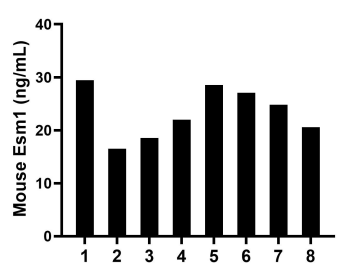
W: [ptgcn.com](http://ptgcn.com)

**This product is exclusively available under Proteintech Group brand and is not available to purchase from any other manufacturer.**

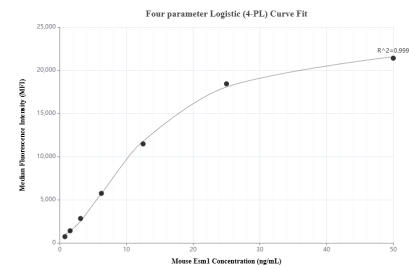
# Selected Validation Data



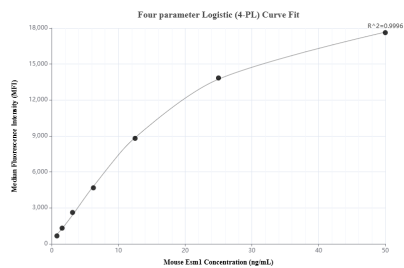
Sandwich ELISA standard curve of MP02164-1, Mouse Esm1 Recombinant Matched Antibody Pair - PBS only. 85814-3-PBS was coated to a plate as the capture antibody and incubated with serial dilutions of standard Eg2784. 85814-2-PBS was HRP conjugated as the detection antibody. Range: 31.25-2000 pg/mL



Serum of eight mice was measured. The Esm1 concentration of detected samples was determined to be 23.4 ng/mL with a range of 16.5-29.5 ng/mL.



Cytometric bead array standard curve of MP02164-1, MOUSE Esm1 Recombinant Matched Antibody Pair, PBS Only. Capture antibody: 85814-3-PBS. Detection antibody: 85814-2-PBS. Standard: Eg2784. Range: 0.781-50 ng/mL



Cytometric bead array standard curve of MP02164-2, MOUSE Esm1 Recombinant Matched Antibody Pair, PBS Only. Capture antibody: 85814-2-PBS. Detection antibody: 85814-1-PBS. Standard: Eg2784. Range: 0.781-50 ng/mL