

For Research Use Only

C4BPB Recombinant antibody

Catalog Number: 85812-4-RR



Basic Information

Catalog Number:

85812-4-RR

Concentration:

1000 μ g/ml

Source:

Rabbit

Isotype:

IgG

Immunogen Catalog Number:

EG2976

GenBank Accession Number:

NM_000716.3

GeneID (NCBI):

725

UNIPROT ID:

P20851-1

Full Name:

complement component 4 binding
protein, beta

Calculated MW:

28 kDa

Observed MW:

45 kDa

Purification Method:

Protein A purification

CloneNo.:

250135C10

Recommended Dilutions:

WB: 1:5000-1:50000

Applications

Tested Applications:

WB, ELISA

Species Specificity:

human

Positive Controls:

WB : human plasma,

Background Information

C4b-binding protein (C4BP) is a large oligomeric glycoprotein, present in plasma at a concentration of approximately 200 mg/L (PMID: 24218259). It is the main inhibitor of the classical complement and lectin pathway. C4BP is composed of two polypeptides (alpha and beta chains), which have molecular weights of 70 and 45 kDa, respectively (PMID: 7561113).

Storage

Storage:

Store at -20°C. Stable for one year after shipment.

Storage Buffer:

PBS with 0.02% sodium azide and 50% glycerol, pH7.3

Aliquoting is unnecessary for -20°C storage

For technical support and original validation data for this product please contact:

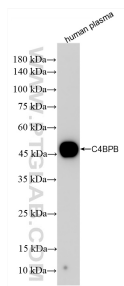
T: 4006900926

E: Proteintech-CN@ptglab.com

W: ptgcn.com

This product is exclusively available under Proteintech Group brand and is not available to purchase from any other manufacturer.

Selected Validation Data



Human plasma sample was subjected to SDS PAGE followed by western blot with 85812-4-RR (C4BPB antibody) at dilution of 1:10000 incubated at room temperature for 1.5 hours.