

For Research Use Only

C4BPB Recombinant antibody, PBS Only

Catalog Number: 85812-4-PBS



Basic Information

Catalog Number:

85812-4-PBS

Concentration:

1 mg/ml

Source:

Rabbit

Isotype:

IgG

Immunogen Catalog Number:

EG2976

GenBank Accession Number:

NM_000716.3

GeneID (NCBI):

725

UNIPROT ID:

P20851-1

Full Name:

complement component 4 binding
protein, beta

Calculated MW:

28 kDa

Observed MW:

45 kDa

Purification Method:

Protein A purification

CloneNo.:

250135C10

Applications

Tested Applications:

WB, Indirect ELISA

Species Specificity:

human

Background Information

C4b-binding protein (C4BP) is a large oligomeric glycoprotein, present in plasma at a concentration of approximately 200 mg/L (PMID: 24218259). It is the main inhibitor of the classical complement and lectin pathway. C4BP is composed of two polypeptides (alpha and beta chains), which have molecular weights of 70 and 45 kDa, respectively (PMID: 7561113).

Storage

Storage:

Store at -80°C.

The product is shipped with ice packs. Upon receipt, store it immediately at -80°C

Storage Buffer:

PBS only, pH7.3

For technical support and original validation data for this product please contact:

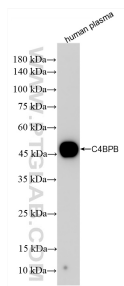
T: 4006900926

E: Proteintech-CN@ptglab.com

W: ptgcn.com

This product is exclusively available under Proteintech Group brand and is not available to purchase from any other manufacturer.

Selected Validation Data



Human plasma sample was subjected to SDS PAGE followed by western blot with 85812-4-RR (C4BPB antibody) at dilution of 1:10000 incubated at room temperature for 1.5 hours. This data was developed using the same antibody clone with 85812-4-PBS in a different storage buffer formulation.