

For Research Use Only

KLK14 Recombinant monoclonal antibody, PBS Only (Capture)

Catalog Number:85809-2-PBS



Basic Information

Catalog Number:

85809-2-PBS

Source:

Rabbit

Isotype:

IgG

Immunogen Catalog Number:

EG2472

GenBank Accession Number:

NM_022046.5

GeneID (NCBI):

43847

UNIPROT ID:

Q9P0G3

Full Name:

kallikrein-related peptidase 14

Calculated MW:

29 kDa

Purification Method:

Protein A purification

CloneNo.:

243023D9

Applications

Tested Applications:

Sandwich ELISA, Indirect ELISA

Species Specificity:

human

Background Information

Storage

Storage:

Store at -80°C.

The product is shipped with ice packs. Upon receipt, store it immediately at -80°C

Storage Buffer:

PBS only, pH7.3

For technical support and original validation data for this product please contact:

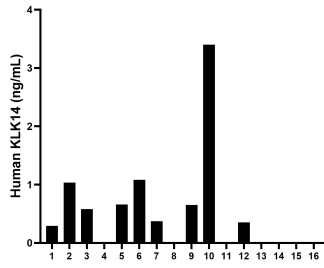
T: 4006900926

E: Proteintech-CN@ptglab.com

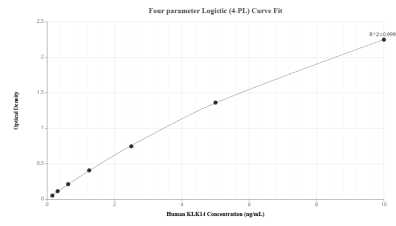
W: ptgcn.com

This product is exclusively available under Proteintech Group brand and is not available to purchase from any other manufacturer.

Selected Validation Data



Plasma of sixteen individual healthy human donors was measured. The human KLK14 concentration of detected samples was determined to be 0.94 ng/mL with a range of ND - 3.40 ng/mL.



Sandwich ELISA standard curve of MP02991-1, Human KLK14 Recombinant Matched Antibody Pair - PBS only. 85809-2-PBS was coated to a plate as the capture antibody and incubated with serial dilutions of standard Eg2472. 85809-1-PBS was HRP conjugated as the detection antibody. Range: 0.156-10 ng/mL