

MEF2D Recombinant antibody

Catalog Number: 85801-5-RR

Basic Information

Catalog Number: 85801-5-RR	GenBank Accession Number: BC040949	Purification Method: Protein A purification
Concentration: 1000 µg/ml	GeneID (NCBI): 4209	CloneNo.: 250068B7
Source: Rabbit	UNIPROT ID: Q14814	Recommended Dilutions: WB: 1:5000-1:50000 IHC: 1:400-1:1600 IF/ICC: 1:500-1:2000
Isotype: IgG	Full Name: myocyte enhancer factor 2D	
Immunogen Catalog Number: AG5700	Calculated MW: 56 kDa Observed MW: 55-60 kDa	

Applications

Tested Applications:
WB, IHC, IF/ICC, ELISA

Species Specificity:
human, mouse, rat

Note-IHC: suggested antigen retrieval with TE buffer pH 9.0; (*) Alternatively, antigen retrieval may be performed with citrate buffer pH 6.0

Positive Controls:

WB : HeLa cells, THP-1 cells, K-562 cells, U2OS cells, C2C12 cells, C6 cells, U266 cells

IHC : mouse brain tissue,

IF/ICC : HeLa cells,

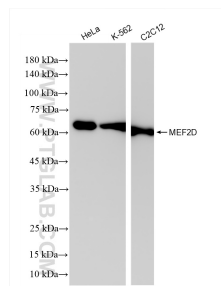
Background Information

MEF2D, also named as Myocyte-specific enhancer factor 2D, is a 521 amino acid protein, which belongs to the MEF2 family. MEF2D is expressed in t in myotubes and also in undifferentiated myoblasts. MEF2D as a transcriptional activator which binds specifically to the MEF2 element, found in numerous muscle-specific and stress-induced genes. MEF2D mediates cellular functions not only in skeletal and cardiac muscle development, but also in neuronal differentiation and survival. The calculated molecular weight of MEF2D is 55 kDa, but Phosphorylated MEF2D is 60 kDa.

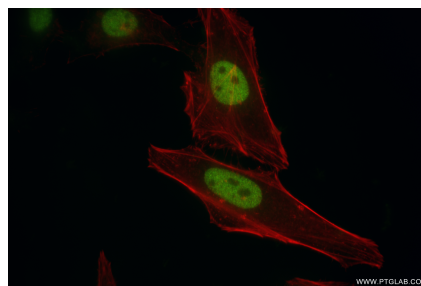
Storage

Storage:
Store at -20°C. Stable for one year after shipment.
Storage Buffer:
PBS with 0.02% sodium azide and 50% glycerol, pH7.3
Aliquoting is unnecessary for -20°C storage

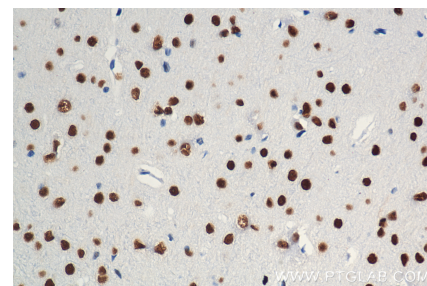
Selected Validation Data



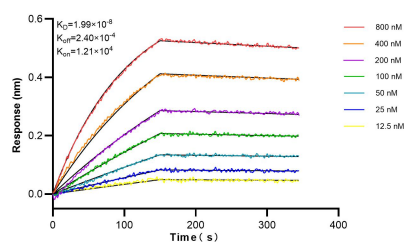
Various lysates were subjected to SDS PAGE followed by western blot with 85801-5-RR (MEF2D antibody) at dilution of 1:10000 incubated at room temperature for 1.5 hours.



Immunofluorescent analysis of (4% PFA) fixed HeLa cells using MEF2D antibody (85801-5-RR, Clone: 250068B7) at dilution of 1:1000 and CoraLite® 488-Conjugated Goat Anti-Rabbit IgG(H+L) (SA00013-2), CL594-Phalloidin (red).



Immunohistochemical analysis of paraffin-embedded mouse brain tissue slide using 85801-5-RR (MEF2D antibody) at dilution of 1:800 (under 40x lens). Heat mediated antigen retrieval with Tris-EDTA buffer (pH 9.0).



Biolayer interferometry (BLI) kinetic assays of 85801-5-RR against Human MEF2D were performed. The affinity constant is 1.99 nM.