

For Research Use Only

BCKDHA Recombinant antibody

Catalog Number: 85799-3-RR



Basic Information

Catalog Number:

85799-3-RR

Concentration:

1000 µg/ml

Source:

Rabbit

Isotype:

IgG

Immunogen Catalog Number:

AG32613

GenBank Accession Number:

BC008933

GeneID (NCBI):

593

UNIPROT ID:

P12694

Full Name:

branched chain keto acid

dehydrogenase E1, alpha polypeptide

Calculated MW:

50 kDa

Observed MW:

42-50 kDa

Purification Method:

Protein A purification

CloneNo.:

250051G11

Recommended Dilutions:

WB 1:5000-1:50000

Applications

Tested Applications:

WB, ELISA

Species Specificity:

human, mouse, rat

Positive Controls:

WB : HeLa cells, mouse liver tissue, HEK-293T cells,
HepG2 cells, rat liver tissue, mouse heart tissue

Background Information

branched chain keto acid dehydrogenase E1, alpha polypeptide (BCKDHA), the gene encoding the regulated subunit of BCKDC was only one of two primary susceptibility genes identified that affected the risk of both type 2 diabetes mellitus (T2DM) and obesity (PMID: 25287287). BIX01294 transcriptionally downregulated the transcription of BCKDHA, which is essential for fueling the tricarboxylic acid (TCA) cycle. Studies have shown that KDM3A, a Jumonji histone demethylase, epigenetically regulates BCKDHA expression by binding to the BCKDHA gene promoter (PMID: 34876693). Moreover, at least four genes including BCKDHA, branched chain keto acid dehydrogenase E1, beta polypeptide (BCKDHB), dihydrolipoamide dehydrogenase (DLD), and dihydrolipoamide branched chain transacylase E2 (DBT) have been reported to be the causative gene for Maple syrup urine disease (MSUD) (PMID: 34187135).

Storage

Storage:

Store at -20°C. Stable for one year after shipment.

Storage Buffer:

PBS with 0.02% sodium azide and 50% glycerol, pH7.3

Aliquoting is unnecessary for -20°C storage

For technical support and original validation data for this product please contact:

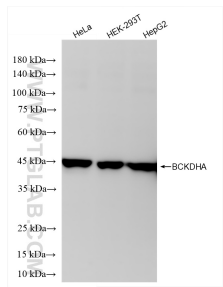
T: 4006900926

E: Proteintech-CN@ptglab.com

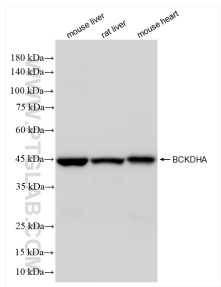
W: ptgcn.com

This product is exclusively available under Proteintech Group brand and is not available to purchase from any other manufacturer.

Selected Validation Data



Various lysates were subjected to SDS PAGE followed by western blot with 85799-3-RR (BCKDHA antibody) at dilution of 1:10000 incubated at room temperature for 1.5 hours.



Various lysates were subjected to SDS PAGE followed by western blot with 85799-3-RR (BCKDHA antibody) at dilution of 1:10000 incubated at room temperature for 1.5 hours.