

For Research Use Only

BCKDHA Recombinant antibody, PBS Only (Capture)

Catalog Number: 85799-3-PBS



Basic Information

Catalog Number: 85799-3-PBS	GenBank Accession Number: BC008933	Purification Method: Protein A purification
Concentration: 1 mg/ml	GeneID (NCBI): 593	CloneNo.: 250051G11
Source: Rabbit	UNIPROT ID: P12694	
Isotype: IgG	Full Name: branched chain keto acid dehydrogenase E1, alpha polypeptide	
Immunogen Catalog Number: AG32613	Calculated MW: 50 kDa	
	Observed MW: 42-50 kDa	

Applications

Tested Applications:
WB, Cytometric bead array, Indirect ELISA

Species Specificity:
human, mouse, rat

Background Information

branched chain keto acid dehydrogenase E1, alpha polypeptide (BCKDHA), the gene encoding the regulated subunit of BCKDC was only one of two primary susceptibility genes identified that affected the risk of both type 2 diabetes mellitus (T2DM) and obesity (PMID: 25287287). BIX01294 transcriptionally downregulated the transcription of BCKDHA, which is essential for fueling the tricarboxylic acid (TCA) cycle. Studies have shown that KDM3A, a Jumonji histone demethylase, epigenetically regulates BCKDHA expression by binding to the BCKDHA gene promoter (PMID: 34876693). Moreover, at least four genes including BCKDHA, branched chain keto acid dehydrogenase E1, beta polypeptide (BCKDHB), dihydrolipoamide dehydrogenase (DLD), and dihydrolipoamide branched chain transacylase E2 (DBT) have been reported to be the causative gene for Maple syrup urine disease (MSUD) (PMID: 34187135).

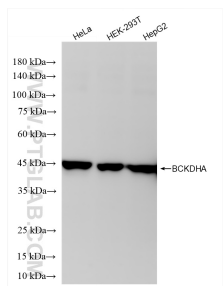
Storage

Storage:
Store at -80°C.
The product is shipped with ice packs. Upon receipt, store it immediately at -80°C
Storage Buffer:
PBS only, pH7.3

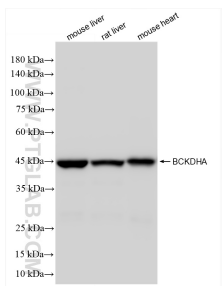
For technical support and original validation data for this product please contact:
T: 4006900926 E: Proteintech-CN@ptglab.com W: ptgcn.com

This product is exclusively available under Proteintech Group brand and is not available to purchase from any other manufacturer.

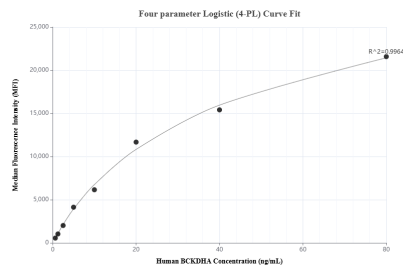
Selected Validation Data



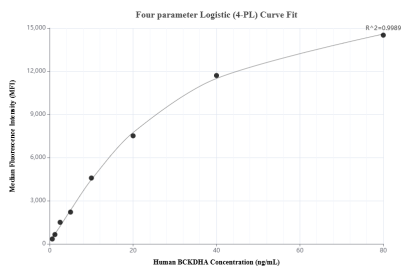
Various lysates were subjected to SDS PAGE followed by western blot with 85799-3-RR (BCKDHA antibody) at dilution of 1:10000 incubated at room temperature for 1.5 hours. This data was developed using the same antibody clone with 85799-3-PBS in a different storage buffer formulation.



Various lysates were subjected to SDS PAGE followed by western blot with 85799-3-RR (BCKDHA antibody) at dilution of 1:10000 incubated at room temperature for 1.5 hours. This data was developed using the same antibody clone with 85799-3-PBS in a different storage buffer formulation.



Cytometric bead array standard curve of MP02125-1, BCKDHA Recombinant Matched Antibody Pair, PBS Only. Capture antibody: 85799-3-PBS. Detection antibody: 85799-2-PBS. Standard: Ag32613. Range: 0.625-80 ng/mL



Cytometric bead array standard curve of MP02125-2, BCKDHA Recombinant Matched Antibody Pair, PBS Only. Capture antibody: 85799-3-PBS. Detection antibody: 85799-1-PBS. Standard: Ag32613. Range: 0.625-80 ng/mL