

For Research Use Only

BCKDHA Recombinant antibody, PBS Only (Capture/Detector)

Catalog Number: 85799-1-PBS



Basic Information

Catalog Number:

85799-1-PBS

Concentration:

1 mg/ml

Source:

Rabbit

Isotype:

IgG

Immunogen Catalog Number:

AG32613

GenBank Accession Number:

BC008933

GeneID (NCBI):

593

UNIPROT ID:

P12694

Full Name:

branched chain keto acid
dehydrogenase E1, alpha polypeptide

Calculated MW:

50 kDa

Purification Method:

Protein A purification

CloneNo.:

250051H2

Applications

Tested Applications:

Cytometric bead array, Sandwich ELISA, Indirect ELISA,
Sample test

Species Specificity:

human

Background Information

Storage

Storage:

Store at -80°C.

The product is shipped with ice packs. Upon receipt, store it immediately at -80°C

Storage Buffer:

PBS only, pH7.3

For technical support and original validation data for this product please contact:

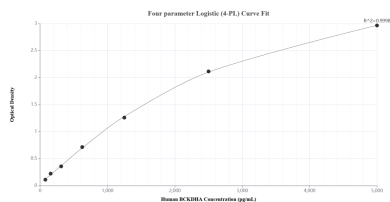
T: 4006900926

E: Proteintech-CN@ptglab.com

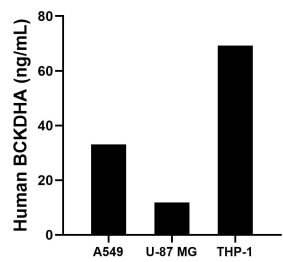
W: ptgcn.com

This product is exclusively available under Proteintech Group brand and is not available to purchase from any other manufacturer.

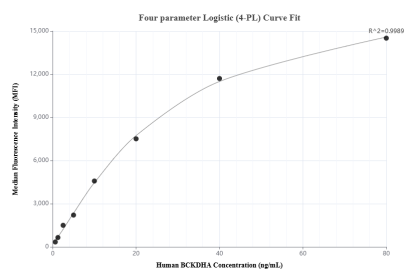
Selected Validation Data



Sandwich ELISA standard curve of MP02125-3, Human BCKDHA Recombinant Matched Antibody Pair - PBS only. 85799-1-PBS was coated to a plate as the capture antibody and incubated with serial dilutions of standard Ag32613. 85799-2-PBS was HRP conjugated as the detection antibody. Range: 78.1-5000 pg/mL



The mean BCKDHA concentration was determined to be 33.1 ng/mL in A549 cell extract based on a 1.3 mg/mL extract load, 11.9 ng/mL in U-87 MG cell extract based on a 2.0 mg/mL extract load and 69.3 ng/mL in THP-1 cell extract based on a 1.5 mg/mL extract load.



Cytometric bead array standard curve of MP02125-2, BCKDHA Recombinant Matched Antibody Pair, PBS Only. Capture antibody: 85799-3-PBS. Detection antibody: 85799-1-PBS. Standard: Ag32613. Range: 0.625-80 ng/mL