

For Research Use Only

# SPR Recombinant antibody, PBS Only (Capture)

Catalog Number: 85796-3-PBS



## Basic Information

Catalog Number:

85796-3-PBS

Concentration:

1 mg/ml

Source:

Rabbit

Isotype:

IgG

Immunogen Catalog Number:

AG10395

GenBank Accession Number:

BC017310

GeneID (NCBI):

6697

UNIPROT ID:

P35270

Full Name:

sepiapterin reductase (7,8-dihydrobiopterin:NADP+ oxidoreductase)

Calculated MW:

261 aa, 28 kDa

Purification Method:

Protein A purification

CloneNo.:

243138C1

## Applications

Tested Applications:

Cytometric bead array, Sandwich ELISA, Indirect ELISA, Sample test

Species Specificity:

human

## Background Information

### Storage

Storage:

Store at -80°C.

The product is shipped with ice packs. Upon receipt, store it immediately at -80°C

Storage Buffer:

PBS Only

For technical support and original validation data for this product please contact:

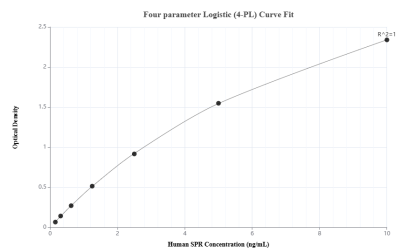
T: 4006900926

E: [Proteintech-CN@ptglab.com](mailto:Proteintech-CN@ptglab.com)

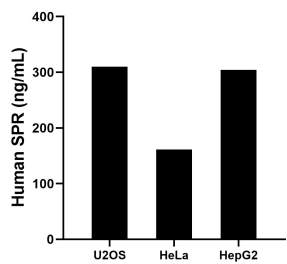
W: [ptgcn.com](http://ptgcn.com)

This product is exclusively available under Proteintech Group brand and is not available to purchase from any other manufacturer.

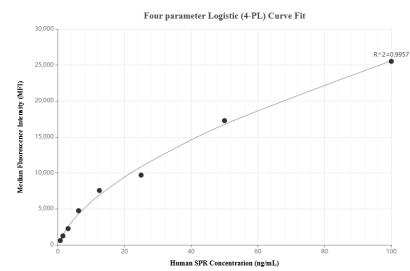
## Selected Validation Data



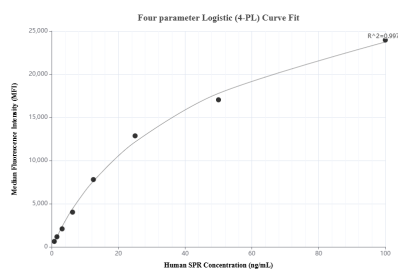
Sandwich ELISA standard curve of MP02100-2, Human SPR Recombinant Matched Antibody Pair - PBS only. 85796-3-PBS was coated to a plate as the capture antibody and incubated with serial dilutions of standard Ag10395. 85796-2-PBS was HRP conjugated as the detection antibody. Range: 0.156-10 ng/mL



The mean SPR concentration was determined to be 309.85 ng/mL in U2OS cell extract based on a 1.4 mg/mL extract load, 161.50 ng/mL in HeLa cell extract based on a 1.8 mg/mL extract load and 304.52 ng/mL in HepG2 cell extract based on a 1.8 mg/mL extract load.



Cytometric bead array standard curve of MP02100-2, SPR Recombinant Matched Antibody Pair, PBS Only. Capture antibody: 85796-3-PBS. Detection antibody: 85796-2-PBS. Standard: Ag10395. Range: 0.781-100 ng/mL



Cytometric bead array standard curve of MP02100-1, SPR Recombinant Matched Antibody Pair, PBS Only. Capture antibody: 85796-3-PBS. Detection antibody: 85796-1-PBS. Standard: Ag10395. Range: 0.781-100 ng/mL