

For Research Use Only

Ezrin Recombinant antibody, PBS Only (Detector)

Catalog Number: 85790-2-PBS



Basic Information

Catalog Number:

85790-2-PBS

Concentration:

1 mg/ml

Source:

Rabbit

Isotype:

IgG

Immunogen Catalog Number:

AG23530

GenBank Accession Number:

BC013903

GeneID (NCBI):

7430

ENSEMBL Gene ID:

ENSG00000092820

UNIPROT ID:

P15311

Full Name:

ezrin

Calculated MW:

69 kDa

Purification Method:

Protein A purification

CloneNo.:

250065B7

Applications

Tested Applications:

Cytometric bead array, Sandwich ELISA, Indirect ELISA, Sample test

Species Specificity:

human

Background Information

Storage

Storage:

Store at -80°C.

The product is shipped with ice packs. Upon receipt, store it immediately at -80°C

Storage Buffer:

PBS only, pH7.3

For technical support and original validation data for this product please contact:

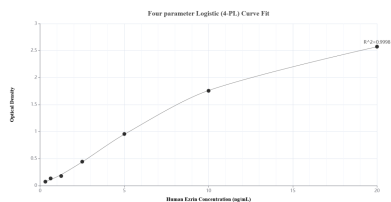
T: 4006900926

E: Proteintech-CN@ptglab.com

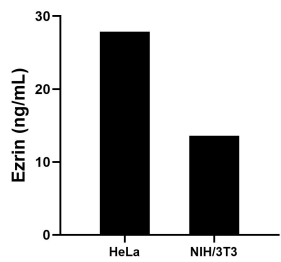
W: ptgcn.com

This product is exclusively available under Proteintech Group brand and is not available to purchase from any other manufacturer.

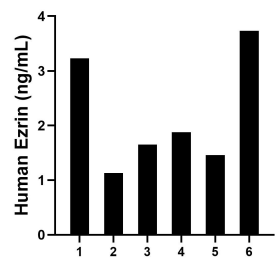
Selected Validation Data



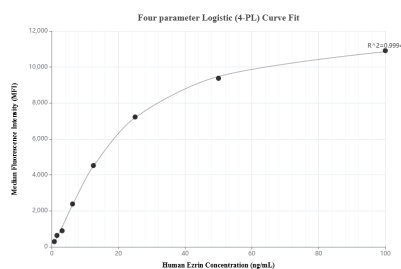
Sandwich ELISA standard curve of MP02097-2, Human Ezrin Recombinant Matched Antibody Pair - PBS only. 85790-3-PBS was coated to a plate as the capture antibody and incubated with serial dilutions of standard Ag23530. 85790-2-PBS was HRP conjugated as the detection antibody. Range: 0.313-20 ng/mL.



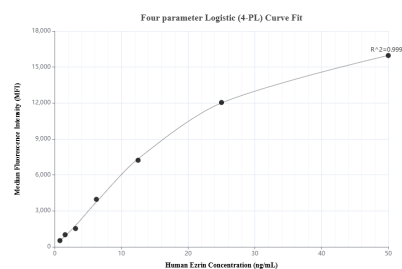
The mean Ezrin concentration was determined to be 27.86 ng/mL in HeLa cell extract based on a 1.50 mg/mL extract load and 13.61 ng/mL in NIH/3T3 cell extract based on a 1.50 mg/mL extract load.



Serum of six individual healthy human donors was measured. The Ezrin concentration of detected samples was determined to be 2.18 ng/mL with a range of 1.13-3.73 ng/mL.



Cytometric bead array standard curve of MP02097-2, Ezrin Recombinant Matched Antibody Pair, PBS Only. Capture antibody: 85790-3-PBS. Detection antibody: 85790-2-PBS. Standard: Ag23530. Range: 0.781-100 ng/mL.



Cytometric bead array standard curve of MP02097-1, Ezrin Recombinant Matched Antibody Pair, PBS Only. Capture antibody: 85790-1-PBS. Detection antibody: 85790-2-PBS. Standard: Ag23530. Range: 0.781-50 ng/mL.