

For Research Use Only

CRHR2 Recombinant antibody, PBS Only

Catalog Number: 85785-1-PBS



Basic Information

Catalog Number:

85785-1-PBS

Concentration:

1000 µg/ml

Source:

Rabbit

Isotype:

IgG

GenBank Accession Number:

NM_001883

GeneID (NCBI):

1395

UNIPROT ID:

Q13324

Full Name:

corticotropin releasing hormone
receptor 2

Calculated MW:

48 kDa

Observed MW:

48 kDa

Purification Method:

Protein A purification

CloneNo.:

250043F4

Applications

Tested Applications:

WB, Indirect ELISA

Species Specificity:

human, mouse, rat

Background Information

CRHR2 is a receptor for corticotropin-releasing factor (CRF) and belongs to the G-protein coupled receptor family. It shows high affinity for CRF and also binds to related peptides such as urocortin I, II, and III. This receptor is involved in mediating the endocrine, autonomic, and behavioral responses to stress and immune challenges.

Storage

Storage:

Store at -80°C.

The product is shipped with ice packs. Upon receipt, store it immediately at -80°C

Storage Buffer:

PBS only, pH7.3

For technical support and original validation data for this product please contact:

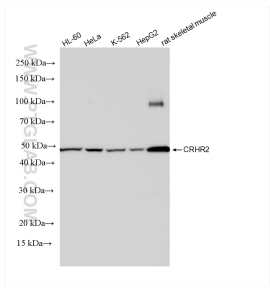
T: 4006900926

E: Proteintech-CN@ptglab.com

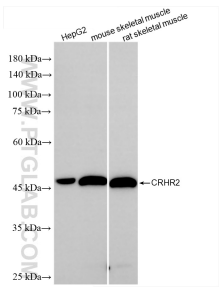
W: ptgcn.com

This product is exclusively available under Proteintech Group brand and is not available to purchase from any other manufacturer.

Selected Validation Data



Various lysates were subjected to SDS PAGE followed by western blot with 85785-1-RR (CRHR2 antibody) at dilution of 1:5000 incubated at room temperature for 1.5 hours. This data was developed using the same antibody clone with 85785-1-PBS in a different storage buffer formulation.



Various lysates were subjected to SDS PAGE followed by western blot with 85785-1-RR (CRHR2 antibody) at dilution of 1:10000 incubated at room temperature for 1.5 hours. This data was developed using the same antibody clone with 85785-1-PBS in a different storage buffer formulation.