

For Research Use Only

# C4b Alpha Chain/C4b-B/C4d-B Recombinant monoclonal antibody

Catalog Number:85782-2-RR



## Basic Information

**Catalog Number:**

85782-2-RR

**Source:**

Rabbit

**Isotype:**

IgG

**GenBank Accession Number:**

NM\_000592

**GeneID (NCBI):**

721

**UNIPROT ID:**

PoCoL5

**Full Name:**

complement component 4B (Chido blood group)

**Calculated MW:**

193 kDa

**Observed MW:**

95 kDa

**Purification Method:**

Protein A purification

**CloneNo.:**

250030C6

**Recommended Dilutions:**

WB: 1:5000-1:50000

IF/ICC: 1:200-1:800

## Applications

**Tested Applications:**

WB, IF/ICC, ELISA

**Species Specificity:**

human

**Positive Controls:**

WB : human blood,

IF/ICC : HepG2 cells,

## Background Information

Complement C4, a component of the classical complement pathway, has an important role in innate immune function. C4 protein is expressed as a single-chain precursor, which is proteolytically cleaved into a trimer of alpha, beta, and gamma chains (molecular weights 95, 78, and 31 kDa) prior to secretion. The alpha chain is cleaved to release C4 anaphylatoxin, an antimicrobial peptide and a mediator of local inflammation. This antibody raised against 1116-1128aa of human C4b protein can recognize C4b precursor, C4b alpha chain, C4b-B, and C4d-B.

## Storage

**Storage:**

Store at -20°C. Stable for one year after shipment.

**Storage Buffer:**

PBS with 0.02% sodium azide and 50% glycerol, pH7.3

Aliquoting is unnecessary for -20°C storage

For technical support and original validation data for this product please contact:

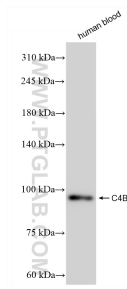
T: 4006900926

E: Proteintech-CN@ptglab.com

W: ptgcn.com

**This product is exclusively available under Proteintech Group brand and is not available to purchase from any other manufacturer.**

## Selected Validation Data



Immunofluorescent analysis of (-20°C Methanol) fixed HepG2 cells using C4B antibody (85782-2-RR, Clone: 250030C6) at dilution of 1:400 and CoraLite® 488-Conjugated Goat Anti-Rabbit IgG(H+L) (SA00013-2).

Human blood was subjected to SDS PAGE followed by western blot with 85782-2-RR (C4B antibody) at dilution of 1:10000 incubated at room temperature for 1.5 hours.