

For Research Use Only

RPL26 Recombinant antibody, PBS Only

Catalog Number: 85775-1-PBS



Basic Information

Catalog Number:

85775-1-PBS

Concentration:

1000 µg/ml

Source:

Rabbit

Isotype:

IgG

Immunogen Catalog Number:

AG11821

GenBank Accession Number:

BC071664

GeneID (NCBI):

6154

UNIPROT ID:

P61254

Full Name:

ribosomal protein L26

Calculated MW:

145 aa, 17 kDa

Observed MW:

17-22 kDa

Purification Method:

Protein A purification

CloneNo.:

243015D3

Applications

Tested Applications:

WB, IF/ICC, Indirect ELISA

Species Specificity:

human, mouse, rat, monkey

Background Information

RPL26, or Ribosomal Protein L26, is a crucial component of the ribosome, the cellular machinery responsible for protein synthesis. It belongs to the large subunit of the ribosome and plays a significant role in ribosome biogenesis and function. RPL26 is involved in the translation process, where it helps decode mRNA into proteins, ensuring proper cellular function and development. RPL26 mutations have been implicated in Diamond-Blackfan anemia (DBA), a rare congenital disorder characterized by erythroid hypoplasia. (PMID: 30355487; 24675553)

Storage

Storage:

Store at -80°C.

The product is shipped with ice packs. Upon receipt, store it immediately at -80°C

Storage Buffer:

PBS only, pH7.3

For technical support and original validation data for this product please contact:

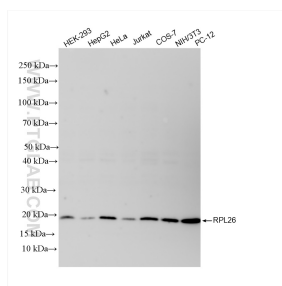
T: 4006900926

E: Proteintech-CN@ptglab.com

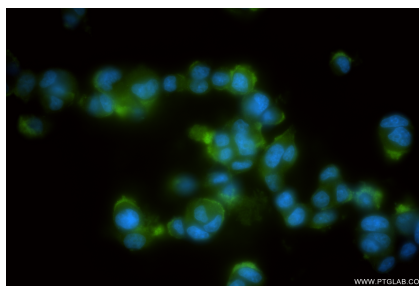
W: ptgcn.com

This product is exclusively available under Proteintech Group brand and is not available to purchase from any other manufacturer.

Selected Validation Data



Various lysates were subjected to SDS PAGE followed by western blot with 85775-1-RR (RPL26 antibody) at dilution of 1:5000 incubated at room temperature for 1.5 hours. This data was developed using the same antibody clone with 85775-1-PBS in a different storage buffer formulation.



Immunofluorescent analysis of (4% PFA) fixed PC-12 cells using RPL26 antibody (85775-1-RR, Clone: 243015D3) at dilution of 1:400 and CoraLite® 488-Conjugated Goat Anti-Rabbit IgG(H+L) (SA00013-2). This data was developed using the same antibody clone with 85775-1-PBS in a different storage buffer formulation.