

For Research Use Only

Mesothelin Recombinant antibody

Catalog Number: 85774-4-RR



Basic Information

Catalog Number:

85774-4-RR

Concentration:

1000 μ g/ml

Source:

Rabbit

Isotype:

IgG

Immunogen Catalog Number:

EG2864

GenBank Accession Number:

NM_018857.1

GeneID (NCBI):

56047

UNIPROT ID:

Q61468

Full Name:

mesothelin

Calculated MW:

69 kDa

Observed MW:

46 kDa

Purification Method:

Protein A purification

CloneNo.:

243099D4

Recommended Dilutions:

WB: 1:2000-1:10000

Applications

Tested Applications:

WB, ELISA

Species Specificity:

mouse

Positive Controls:

WB : mouse serum,

Background Information

Mesothelin (MSLN) is a cell surface glycoprotein that was discovered in 1992 by Kai Chang, Ira Pastan, and Mark Willingham at the National Cancer Institute in Bethesda, MD. It is synthesized as a 69-kDa precursor protein, which is cleaved to form two proteins: a membrane-bound MSLN and a soluble megakaryocyte potentiating factor (MPF). MSLN is overexpressed in various tumor types, including mesothelioma, ovarian cancer, pancreatic adenocarcinoma, gastric cancer, and triple-negative breast cancer (TNBC). However, it is expressed at low levels in normal tissues, primarily on the mesothelial cells lining the pleura, pericardium, and peritoneum. (PMID: 37869242)

Storage

Storage:

Store at -20°C. Stable for one year after shipment.

Storage Buffer:

PBS with 0.02% sodium azide and 50% glycerol, pH7.3

Aliquoting is unnecessary for -20°C storage

For technical support and original validation data for this product please contact:

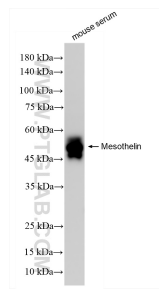
T: 4006900926

E: Proteintech-CN@ptglab.com

W: ptgcn.com

This product is exclusively available under Proteintech Group brand and is not available to purchase from any other manufacturer.

Selected Validation Data



mouse serum were subjected to SDS PAGE followed by western blot with 85774-4-RR (Msln antibody) at dilution of 1:5000 incubated at room temperature for 1.5 hours.