

For Research Use Only

# Mouse Mesothelin Recombinant antibody, PBS Only

Catalog Number: 85774-4-PBS



## Basic Information

Catalog Number: 85774-4-PBS	GenBank Accession Number: NM_018857.1	Purification Method: Protein A purification
Concentration: 1 mg/ml	GeneID (NCBI): 56047	CloneNo.: 243099D4
Source: Rabbit	UNIPROT ID: Q61468	
Isotype: IgG	Full Name: mesothelin	
Immunogen Catalog Number: EG2864	Calculated MW: 69 kDa	
	Observed MW: 46 kDa	

## Applications

Tested Applications:  
WB, Indirect ELISA

Species Specificity:  
mouse

## Background Information

Mesothelin (MSLN) is a cell surface glycoprotein that was discovered in 1992 by Kai Chang, Ira Pastan, and Mark Willingham at the National Cancer Institute in Bethesda, MD. It is synthesized as a 69-kDa precursor protein, which is cleaved to form two proteins: a membrane-bound MSLN and a soluble megakaryocyte potentiating factor (MPF). MSLN is overexpressed in various tumor types, including mesothelioma, ovarian cancer, pancreatic adenocarcinoma, gastric cancer, and triple-negative breast cancer (TNBC). However, it is expressed at low levels in normal tissues, primarily on the mesothelial cells lining the pleura, pericardium, and peritoneum. (PMID: 37869242)

## Storage

Storage:  
Store at -80°C.  
**The product is shipped with ice packs. Upon receipt, store it immediately at -80°C**

Storage Buffer:  
PBS only, pH7.3

For technical support and original validation data for this product please contact:

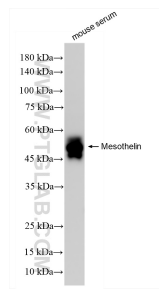
T: 4006900926

E: Proteintech-CN@ptglab.com

W: ptgcn.com

**This product is exclusively available under Proteintech Group brand and is not available to purchase from any other manufacturer.**

## Selected Validation Data



mouse serum were subjected to SDS PAGE followed by western blot with 85774-4-RR (Msln antibody) at dilution of 1:5000 incubated at room temperature for 1.5 hours. This data was developed using the same antibody clone with 85774-4-PBS in a different storage buffer formulation.