

For Research Use Only

TOMM40 Recombinant antibody, PBS Only (Capture)

Catalog Number: 85773-3-PBS



Basic Information

Catalog Number:

85773-3-PBS

Concentration:

1 mg/ml

Source:

Rabbit

Isotype:

IgG

Immunogen Catalog Number:

AG13065

GenBank Accession Number:

BC017224

GeneID (NCBI):

10452

UNIPROT ID:

O96008

Full Name:

translocase of outer mitochondrial
membrane 40 homolog (yeast)

Calculated MW:

38 kDa

Purification Method:

Protein A purification

CloneNo.:

250010D8

Applications

Tested Applications:

Cytometric bead array, Indirect ELISA

Species Specificity:

human

Background Information

Storage

Storage:

Store at -80°C.

The product is shipped with ice packs. Upon receipt, store it immediately at -80°C

Storage Buffer:

PBS Only

For technical support and original validation data for this product please contact:

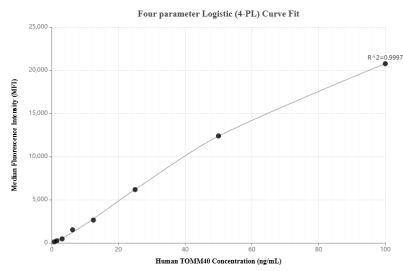
T: 4006900926

E: Proteintech-CN@ptglab.com

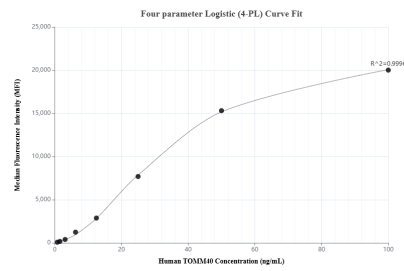
W: ptgcn.com

This product is exclusively available under Proteintech Group brand and is not available to purchase from any other manufacturer.

Selected Validation Data



Cytometric bead array standard curve of MP02065-1, TOMM40 Recombinant Matched Antibody Pair, PBS Only. Capture antibody: 85773-3-PBS. Detection antibody: 85773-2-PBS. Standard: Ag13065. Range: 0.781-100 ng/mL



Cytometric bead array standard curve of MP02065-2, TOMM40 Recombinant Matched Antibody Pair, PBS Only. Capture antibody: 85773-3-PBS. Detection antibody: 85773-1-PBS. Standard: Ag13065. Range: 0.781-100 ng/mL