

For Research Use Only

TAP1 Recombinant antibody, PBS Only (Capture)

Catalog Number: 85766-1-PBS



Basic Information

Catalog Number:

85766-1-PBS

Concentration:

1 mg/ml

Source:

Rabbit

Isotype:

IgG

Immunogen Catalog Number:

AG1619

GenBank Accession Number:

BC014081

GeneID (NCBI):

6890

UNIPROT ID:

Q03518

Full Name:

transporter 1, ATP-binding cassette, sub-family B (MDR/TAP)

Calculated MW:

81 kDa

Purification Method:

Protein A purification

CloneNo.:

250037D7

Applications

Tested Applications:

Cytometric bead array, Sandwich ELISA, Indirect ELISA, Sample test

Species Specificity:

human

Background Information

Storage

Storage:

Store at -80°C.

The product is shipped with ice packs. Upon receipt, store it immediately at -80°C

Storage Buffer:

PBS only, pH7.3

For technical support and original validation data for this product please contact:

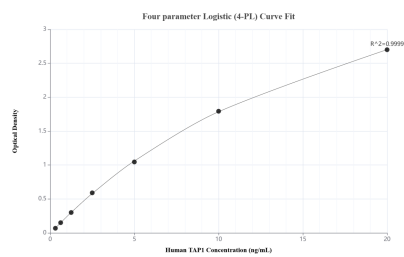
T: 4006900926

E: Proteintech-CN@ptglab.com

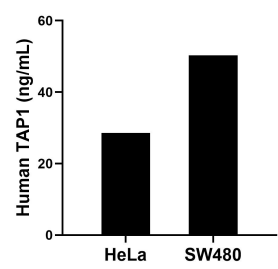
W: ptgcn.com

This product is exclusively available under Proteintech Group brand and is not available to purchase from any other manufacturer.

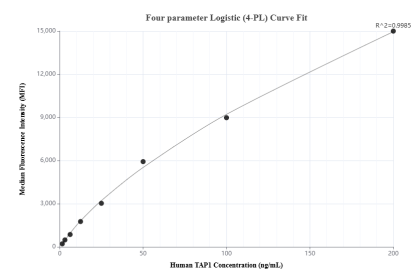
Selected Validation Data



Sandwich ELISA standard curve of MP02080-1, Human TAP1 Recombinant Matched Antibody Pair - PBS only. 85766-1-PBS was coated to a plate as the capture antibody and incubated with serial dilutions of standard Ag1619. 85766-3-PBS was HRP conjugated as the detection antibody. Range: 0.313-20 ng/mL.



The mean TAP1 concentration was determined to be 28.62 ng/mL in HeLa cell extract based on a 2.10 mg/mL extract load and 50.30 ng/mL in SW480 cell extract based on a 1.50 mg/mL extract load.



Cytometric bead array standard curve of MP02080-1, TAP1 Recombinant Matched Antibody Pair, PBS Only. Capture antibody: 85766-1-PBS. Detection antibody: 85766-3-PBS. Standard: Ag1619. Range: 1.563-200 ng/mL.