

For Research Use Only

# PRL Recombinant monoclonal antibody, PBS Only (Capture)

Catalog Number: 85765-7-PBS



## Basic Information

<b>Catalog Number:</b> 85765-7-PBS	<b>GenBank Accession Number:</b> NM_000948.5	<b>Purification Method:</b> Protein A purification
<b>Source:</b> Rabbit	<b>GeneID (NCBI):</b> 5617	<b>CloneNo.:</b> 252191D7
<b>Isotype:</b> IgG	<b>UNIPROT ID:</b> P01236	
<b>Immunogen Catalog Number:</b> EG5868	<b>Full Name:</b> prolactin	
	<b>Calculated MW:</b> 26 kDa	

## Applications

**Tested Applications:**  
Sandwich ELISA, Indirect ELISA

**Species Specificity:**  
human

## Background Information

### Storage

**Storage:**  
Store at -80°C.  
**The product is shipped with ice packs. Upon receipt, store it immediately at -80°C**

**Storage Buffer:**  
PBS only, pH7.3

For technical support and original validation data for this product please contact:

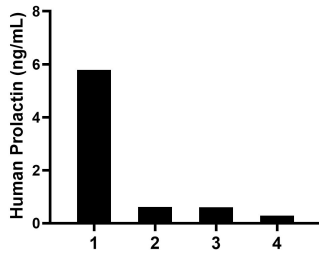
T: 4006900926

E: [Proteintech-CN@ptglab.com](mailto:Proteintech-CN@ptglab.com)

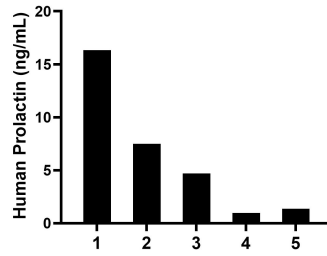
W: [ptgcn.com](http://ptgcn.com)

**This product is exclusively available under Proteintech Group brand and is not available to purchase from any other manufacturer.**

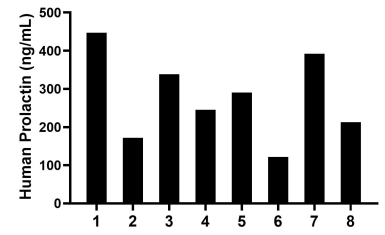
## Selected Validation Data



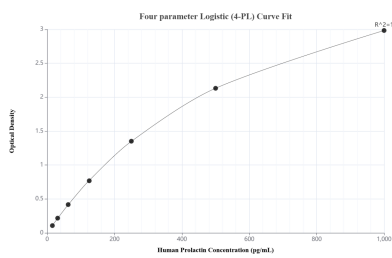
Plasma of four individual healthy human donors was measured. The Prolactin concentration of detected samples was determined to be 1.8 ng/mL with a range of 0.3-5.8 ng/mL.



Human milk of five individual healthy human donors was measured. The Prolactin concentration of detected samples was determined to be 6.2 ng/mL with a range of 1.0-16.3 ng/mL.



Serum of eight individual pregnant women donors was measured. The Prolactin concentration of detected samples was determined to be 277.5 ng/mL with a range of 121.7-447.4 ng/mL.



Sandwich ELISA standard curve of MP02083-4, Human Prolactin Recombinant Matched Antibody Pair - PBS only. 85765-7-PBS was coated to a plate as the capture antibody and incubated with serial dilutions of standard Eg5868. 85765-6-PBS was HRP conjugated as the detection antibody. Range: 15.6-1000 pg/mL.