

For Research Use Only

PRL Recombinant monoclonal antibody, PBS Only (Detector)

Catalog Number:85765-6-PBS



Basic Information

Catalog Number: 85765-6-PBS	GenBank Accession Number: NM_000948.5	Purification Method: Protein A purification
Source: Rabbit	GeneID (NCBI): 5617	CloneNo.: 252191F8
Isotype: IgG	UNIPROT ID: P01236	
Immunogen Catalog Number: EG5868	Full Name: prolactin	
	Calculated MW: 26 kDa	

Applications

Tested Applications:
Sandwich ELISA, Indirect ELISA

Species Specificity:
human

Background Information

Storage

Storage:
Store at -80°C.
The product is shipped with ice packs. Upon receipt, store it immediately at -80°C

Storage Buffer:
PBS only, pH7.3

For technical support and original validation data for this product please contact:

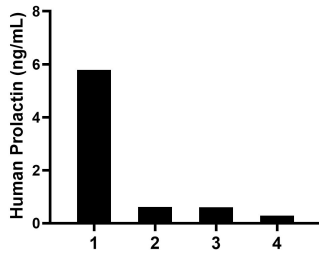
T: 4006900926

E: Proteintech-CN@ptglab.com

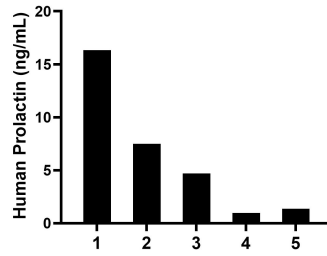
W: ptgcn.com

This product is exclusively available under Proteintech Group brand and is not available to purchase from any other manufacturer.

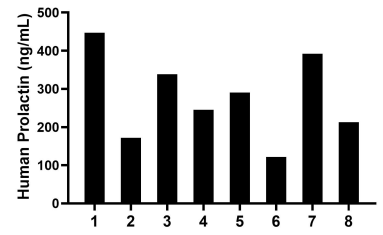
Selected Validation Data



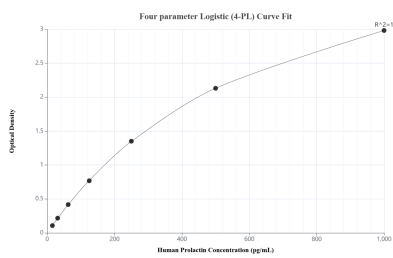
Plasma of four individual healthy human donors was measured. The Prolactin concentration of detected samples was determined to be 1.8 ng/mL with a range of 0.3-5.8 ng/mL.



Human milk of five individual healthy human donors was measured. The Prolactin concentration of detected samples was determined to be 6.2 ng/mL with a range of 1.0-16.3 ng/mL.



Serum of eight individual pregnant women donors was measured. The Prolactin concentration of detected samples was determined to be 277.5 ng/mL with a range of 121.7-447.4 ng/mL.



Sandwich ELISA standard curve of MP02083-4, Human Prolactin Recombinant Matched Antibody Pair - PBS only. 85765-7-PBS was coated to a plate as the capture antibody and incubated with serial dilutions of standard Eg5868. 85765-6-PBS was HRP conjugated as the detection antibody. Range: 15.6-1000 pg/mL.