

For Research Use Only

# PELO Recombinant antibody, PBS Only (Detector)

Catalog Number: 85743-2-PBS



## Basic Information

Catalog Number: 85743-2-PBS	GenBank Accession Number: BC005889	Purification Method: Protein A purification
Concentration: 1 mg/ml	GeneID (NCBI): 53918	CloneNo.: 243137A4
Source: Rabbit	UNIPROT ID: Q9BRX2	
Isotype: IgG	Full Name: pelota homolog (Drosophila)	
Immunogen Catalog Number: AG0873	Calculated MW: 43 kDa	
	Observed MW: 43-45 kDa	

## Applications

**Tested Applications:**  
WB, Cytometric bead array, Indirect ELISA

**Species Specificity:**  
human, mouse, rat

## Background Information

The Pelo gene was originally identified in a mutagenesis screen for spermatogenesis-specific genes of *Drosophila melanogaster*. The PELO is required for the meiotic division during the G2/M transition, and functions in recognizing stalled ribosomes and triggering endonucleolytic cleavage of the mRNA, a mechanism to release non-functional ribosomes and degrade damaged mRNAs [PMID:12556505]. It may participate in the machinery of protein synthesis or in the regulation of mRNA translation [PMID:9584085].

## Storage

**Storage:**  
Store at -80°C.  
**The product is shipped with ice packs. Upon receipt, store it immediately at -80°C**

**Storage Buffer:**  
PBS only, pH7.3

For technical support and original validation data for this product please contact:

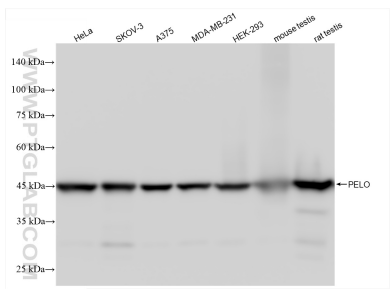
T: 4006900926

E: Proteintech-CN@ptglab.com

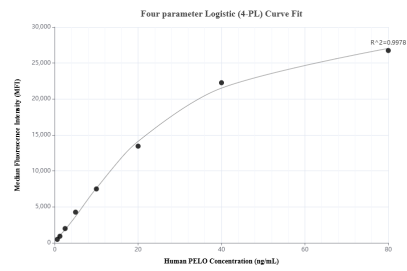
W: ptgcn.com

**This product is exclusively available under Proteintech Group brand and is not available to purchase from any other manufacturer.**

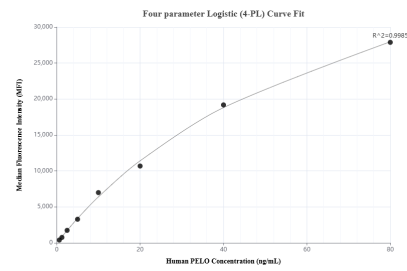
## Selected Validation Data



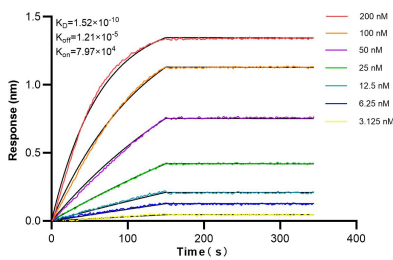
Various lysates were subjected to SDS PAGE followed by western blot with 85743-2-RR (PELO antibody) at dilution of 1:10000 incubated at room temperature for 1.5 hours. This data was developed using the same antibody clone with 85743-2-PBS in a different storage buffer formulation.



Cytometric bead array standard curve of MP02111-2, PELO Recombinant Matched Antibody Pair, PBS Only. Capture antibody: 85743-3-PBS. Detection antibody: 85743-2-PBS. Standard: Ag0873. Range: 0.625-80 ng/mL.



Cytometric bead array standard curve of MP02111-1, PELO Recombinant Matched Antibody Pair, PBS Only. Capture antibody: 85743-1-PBS. Detection antibody: 85743-2-PBS. Standard: Ag0873. Range: 0.625-80 ng/mL.



Biolayer interferometry (BLI) kinetic assays of 85743-2-RR against Human PELO were performed. The affinity constant is 0.152 nM.