

For Research Use Only

# KLK10 Recombinant antibody, PBS Only (Detector)

Catalog Number: 85741-6-PBS



## Basic Information

Catalog Number:

85741-6-PBS

Concentration:

1 mg/ml

Source:

Rabbit

Isotype:

IgG

Immunogen Catalog Number:

EG3132

GenBank Accession Number:

NM\_002776.4

GeneID (NCBI):

5655

UNIPROT ID:

O43240

Full Name:

kallikrein-related peptidase 10

Calculated MW:

30 kDa

Purification Method:

Protein A purification

CloneNo.:

242746E2

## Applications

Tested Applications:

Sandwich ELISA, Indirect ELISA, Sample test

Species Specificity:

human

## Background Information

### Storage

Storage:

Store at -80°C.

The product is shipped with ice packs. Upon receipt, store it immediately at -80°C

Storage Buffer:

PBS only, pH7.3

For technical support and original validation data for this product please contact:

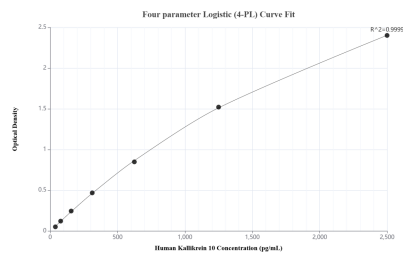
T: 4006900926

E: [Proteintech-CN@ptglab.com](mailto:Proteintech-CN@ptglab.com)

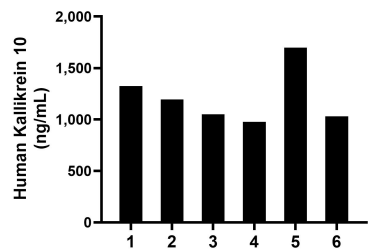
W: [ptgcn.com](http://ptgcn.com)

This product is exclusively available under Proteintech Group brand and is not available to purchase from any other manufacturer.

## Selected Validation Data



Sandwich ELISA standard curve of MP02112-3, Human Kallikrein 10 Recombinant Matched Antibody Pair - PBS only. 85741-4-PBS was coated to a plate as the capture antibody and incubated with serial dilutions of standard Eg3132. 85741-6-PBS was HRP conjugated as the detection antibody. Range: 39.1-2500 pg/mL.



Serum of six individual healthy human donors was measured. The Kallikrein 10 concentration of detected samples was determined to be 1,212.5 pg/mL with a range of 977.3-1,697.0 pg/mL.