

For Research Use Only

# KLK10 Recombinant antibody, PBS Only (Capture)

Catalog Number: 85741-4-PBS



## Basic Information

Catalog Number: 85741-4-PBS	GenBank Accession Number: NM_002776.4	Purification Method: Protein A purification
Concentration: 1 mg/ml	GeneID (NCBI): 5655	CloneNo.: 242746F1
Source: Rabbit	UNIPROT ID: O43240	
Isotype: IgG	Full Name: kallikrein-related peptidase 10	
Immunogen Catalog Number: EG3132	Calculated MW: 30 kDa	

## Applications

**Tested Applications:**  
Cytometric bead array, Sandwich ELISA, Indirect ELISA, Sample test

**Species Specificity:**  
human

## Background Information

### Storage

**Storage:**  
Store at -80°C.  
**The product is shipped with ice packs. Upon receipt, store it immediately at -80°C**

**Storage Buffer:**  
PBS only, pH7.3

For technical support and original validation data for this product please contact:

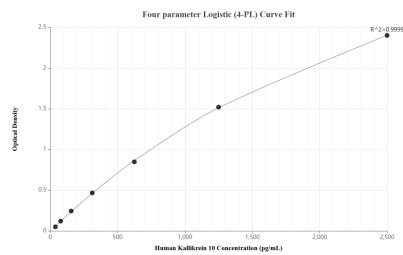
T: 4006900926

E: [Proteintech-CN@ptglab.com](mailto:Proteintech-CN@ptglab.com)

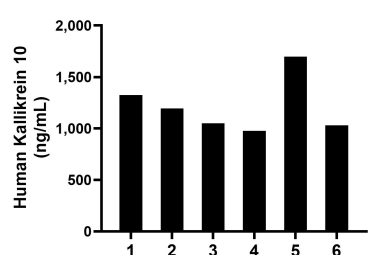
W: [ptgcn.com](http://ptgcn.com)

**This product is exclusively available under Proteintech Group brand and is not available to purchase from any other manufacturer.**

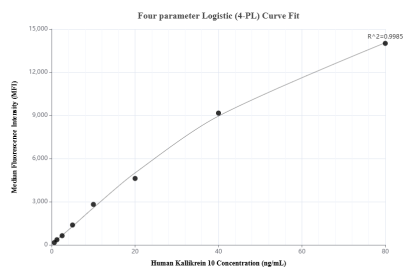
## Selected Validation Data



Sandwich ELISA standard curve of MP02112-3, Human Kallikrein 10 Recombinant Matched Antibody Pair - PBS only. 85741-4-PBS was coated to a plate as the capture antibody and incubated with serial dilutions of standard Eg3132. 85741-6-PBS was HRP conjugated as the detection antibody. Range: 39.1-2500 pg/mL.



Serum of six individual healthy human donors was measured. The Kallikrein 10 concentration of detected samples was determined to be 1,212.5 pg/mL with a range of 977.3-1,697.0 pg/mL.



Cytometric bead array standard curve of MP02112-2, Kallikrein 10 Recombinant Matched Antibody Pair, PBS Only. Capture antibody: 85741-4-PBS. Detection antibody: 85741-3-PBS. Standard: Eg3132. Range: 0.625-80 ng/mL.