

For Research Use Only

# Mouse NOV/CCN3 Recombinant antibody, PBS Only (Detector)

Catalog Number: 85731-1-PBS



## Basic Information

Catalog Number: 85731-1-PBS	GenBank Accession Number: NM_010930.4	Purification Method: Protein A purification
Concentration: 1 mg/ml	GeneID (NCBI): 18133	CloneNo.: 25005482
Source: Rabbit	UNIPROT ID: Q64299	
Isotype: IgG	Full Name: nephroblastoma overexpressed gene	
Immunogen Catalog Number: EG2856	Calculated MW: 39 kDa	
	Observed MW: 46 kDa	

## Applications

**Tested Applications:**  
WB, Cytometric bead array, Indirect ELISA

**Species Specificity:**  
human, mouse, rat

## Background Information

CCN family member 3 (CCN3), also known as Nephroblastoma overexpressed (NOV) protein, is a member of the CCN protein family (PMID: 1309586). CCN3 is predominantly expressed in the cytoplasm, nucleus, and extracellular space. As a subset of extracellular matrix proteins, it can directly bind to the integrin receptor family on the cell surface and participate in signal transduction between the cell surface and the extracellular matrix structure (PMID: 37378812). CCN3 exhibits anti-proliferative activity in normal cells and most tumor cells (PMID: 17340618). CCN3 co-localizes with connexin 43 (Cx43) in the plasma membrane, and these two proteins physically interact to inhibit cell growth (PMID: 15213231). CCN3 can induce myofibroblast differentiation through the Notch pathway (PMID: 12050162). CCN can promote adhesion of endothelial cells, vascular smooth muscle cells, and fibroblasts through heparan sulfate proteoglycans (HSPG) (PMID: 30158025).

## Storage

**Storage:**  
Store at -80°C.  
**The product is shipped with ice packs. Upon receipt, store it immediately at -80°C**

**Storage Buffer:**  
PBS only, pH7.3

For technical support and original validation data for this product please contact:

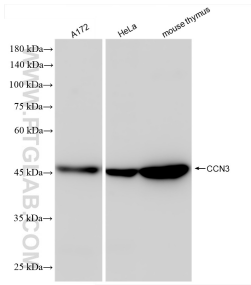
T: 4006900926

E: Proteintech-CN@ptglab.com

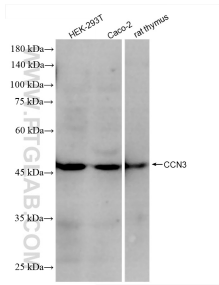
W: ptgcn.com

**This product is exclusively available under Proteintech Group brand and is not available to purchase from any other manufacturer.**

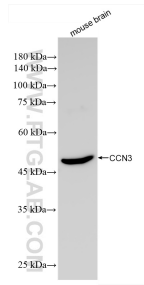
## Selected Validation Data



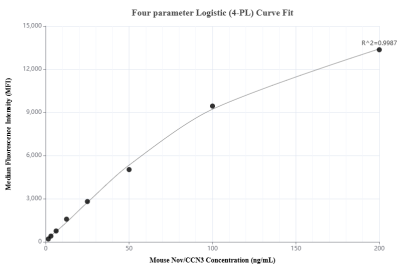
Various lysates were subjected to SDS PAGE followed by western blot with 85731-1-RR (Nov antibody) at dilution of 1:2000 incubated at room temperature for 1.5 hours. This data was developed using the same antibody clone with 85731-1-PBS in a different storage buffer formulation.



Various lysates were subjected to SDS PAGE followed by western blot with 85731-1-RR (Nov antibody) at dilution of 1:2000 incubated at room temperature for 1.5 hours. This data was developed using the same antibody clone with 85731-1-PBS in a different storage buffer formulation.



Mouse brain tissue was subjected to SDS PAGE followed by western blot with 85731-1-RR (Nov antibody) at dilution of 1:10000 incubated at room temperature for 1.5 hours. This data was developed using the same antibody clone with 85731-1-PBS in a different storage buffer formulation.



Cytometric bead array standard curve of MP02088-1, MOUSE Nov/CCN3 Recombinant Matched Antibody Pair, PBS Only. Capture antibody: 85731-2-PBS. Detection antibody: 85731-1-PBS. Standard: Eg2856. Range: 1.563-200 ng/mL.