

For Research Use Only

STIM2 Recombinant antibody

Catalog Number: 85727-1-RR



Basic Information

Catalog Number:

85727-1-RR

Concentration:

1000 µg/ml

Source:

Rabbit

Isotype:

IgG

Immunogen Catalog Number:

AG15530

GenBank Accession Number:

BC146661

GeneID (NCBI):

57620

UNIPROT ID:

Q9P246

Full Name:

stromal interaction molecule 2

Calculated MW:

754 aa, 85 kDa

Observed MW:

85-115 kDa

Purification Method:

Protein A purification

CloneNo.:

250016E8

Recommended Dilutions:

WB 1:5000-1:50000

Applications

Tested Applications:

WB, ELISA

Species Specificity:

human

Positive Controls:

WB : Jurkat cells, BxPC-3 cells, HepG2 cells, HEK-293 cells, HeLa cells

Background Information

STIM2, also named as KIAA1482, functions as a highly sensitive Ca²⁺ sensor in the endoplasmic reticulum which activates both store-operated and store-independent Ca²⁺-influx. Regulates basal cytosolic and endoplasmic reticulum Ca²⁺ concentrations. Upon mild variations of the endoplasmic reticulum Ca²⁺ concentration, STIM2 translocates from the endoplasmic reticulum to the plasma membrane where it probably activates the Ca²⁺ release-activated Ca²⁺ (CRAC) channels ORAI1, ORAI2 and ORAI3. STIM2 may inhibit STIM1-mediated Ca²⁺ influx. STIM2 has 2 isoforms 105kd and 115kd with Differential levels of phosphorylation.

Storage

Storage:

Store at -20°C. Stable for one year after shipment.

Storage Buffer:

PBS with 0.02% sodium azide and 50% glycerol, pH7.3

Aliquoting is unnecessary for -20°C storage

For technical support and original validation data for this product please contact:

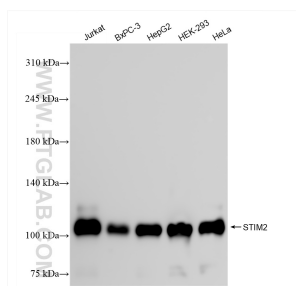
T: 4006900926

E: Proteintech-CN@ptglab.com

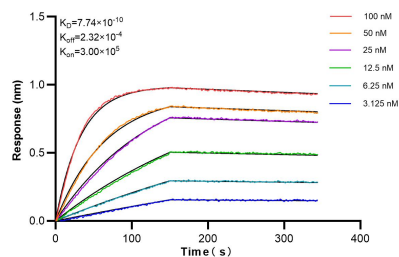
W: ptgcn.com

This product is exclusively available under Proteintech Group brand and is not available to purchase from any other manufacturer.

Selected Validation Data



Various lysates were subjected to SDS PAGE followed by western blot with 85727-1-RR (STIM2 antibody) at dilution of 1:10000 incubated at room temperature for 1.5 hours.



Biolayer interferometry (BLI) kinetic assays of 85727-1-RR against Human STIM2 were performed. The affinity constant is 0.774 nM.