

For Research Use Only

# Mouse Crtam (CD355) Recombinant antibody, PBS Only (Detector)

Catalog Number:85724-6-PBS



## Basic Information

<b>Catalog Number:</b> 85724-6-PBS	<b>GenBank Accession Number:</b> NM_001281954.1	<b>Purification Method:</b> Protein A purification
<b>Concentration:</b> 1 mg/ml	<b>GeneID (NCBI):</b> 54698	<b>CloneNo.:</b> 250055C4
<b>Source:</b> Rabbit	<b>UNIPROT ID:</b> Q149L7-1	
<b>Isotype:</b> IgG	<b>Full Name:</b> cytotoxic and regulatory T cell molecule	
<b>Immunogen Catalog Number:</b> EG2691	<b>Calculated MW:</b> 44 kDa	

## Applications

**Tested Applications:**  
Sandwich ELISA, Indirect ELISA, Sample test

**Species Specificity:**  
mouse

## Background Information

### Storage

**Storage:**  
Store at -80°C.  
**The product is shipped with ice packs. Upon receipt, store it immediately at -80°C**

**Storage Buffer:**  
PBS only, pH7.3

For technical support and original validation data for this product please contact:

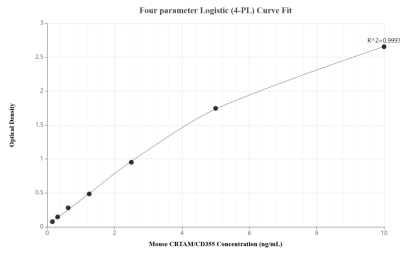
T: 4006900926

E: [Proteintech-CN@ptglab.com](mailto:Proteintech-CN@ptglab.com)

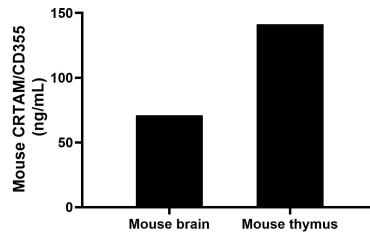
W: [ptgcn.com](http://ptgcn.com)

**This product is exclusively available under Proteintech Group brand and is not available to purchase from any other manufacturer.**

## Selected Validation Data



Sandwich ELISA standard curve of MP02101-3, Mouse CRTAM/CD355 Recombinant Matched Antibody Pair - PBS only. 85724-4-PBS was coated to a plate as the capture antibody and incubated with serial dilutions of standard Eg2691. 85724-6-PBS was HRP conjugated as the detection antibody. Range: 0.156-10 ng/mL



The mean CRTAM/CD355 concentration was determined to be 70.99 ng/mL in mouse brain tissue extract based on a 6.60 mg/mL extract load and 141.42 ng/mL in mouse thymus tissue extract based on a 5.80 mg/mL extract load.