

For Research Use Only

Mouse Crtam (CD355) Recombinant antibody, PBS Only (Capture)

Catalog Number:85724-4-PBS



Basic Information

| | | |
|--|---|---|
| Catalog Number: 85724-4-PBS | GenBank Accession Number: NM_001281954.1 | Purification Method: Protein A purification |
| Concentration: 1 mg/ml | GeneID (NCBI): 54698 | CloneNo.: 250055G4 |
| Source: Rabbit | UNIPROT ID: Q149L7-1 | |
| Isotype: IgG | Full Name: cytotoxic and regulatory T cell molecule | |
| Immunogen Catalog Number: EG2691 | Calculated MW: 44 kDa | |

Applications

Tested Applications:
Cytometric bead array, Sandwich ELISA, Indirect ELISA, Sample test

Species Specificity:
mouse

Background Information

Storage

Storage:
Store at -80°C.
The product is shipped with ice packs. Upon receipt, store it immediately at -80°C

Storage Buffer:
PBS only, pH7.3

For technical support and original validation data for this product please contact:

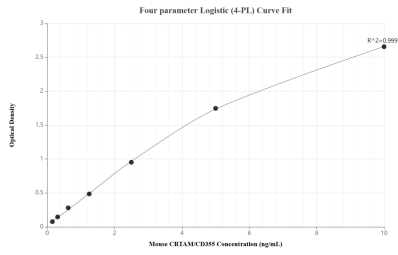
T: 4006900926

E: Proteintech-CN@ptglab.com

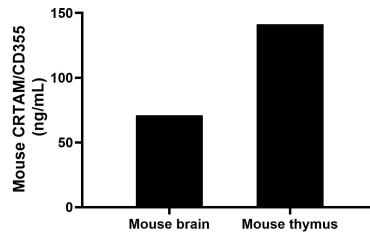
W: ptgcn.com

This product is exclusively available under Proteintech Group brand and is not available to purchase from any other manufacturer.

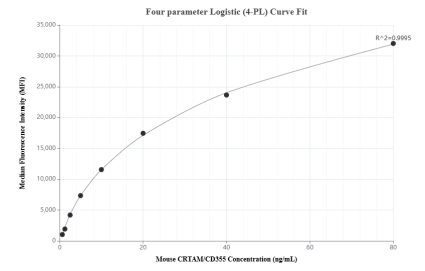
Selected Validation Data



Sandwich ELISA standard curve of MP02101-3, Mouse CRTAM/CD355 Recombinant Matched Antibody Pair - PBS only. 85724-4-PBS was coated to a plate as the capture antibody and incubated with serial dilutions of standard Eg2691. 85724-6-PBS was HRP conjugated as the detection antibody. Range: 0.156-10 ng/mL



The mean CRTAM/CD355 concentration was determined to be 70.99 ng/mL in mouse brain tissue extract based on a 6.60 mg/mL extract load and 141.42 ng/mL in mouse thymus tissue extract based on a 5.80 mg/mL extract load.



Cytometric bead array standard curve of MP02101-1, MOUSE CRTAM/CD355 Recombinant Matched Antibody Pair, PBS Only. Capture antibody: 85724-4-PBS. Detection antibody: 85724-3-PBS. Standard: Eg2691. Range: 0.625-80 ng/mL