

For Research Use Only

ZCCHC3 Recombinant antibody, PBS Only (Capture)

Catalog Number: 85721-3-PBS



Basic Information

Catalog Number:

85721-3-PBS

Concentration:

1 mg/ml

Source:

Rabbit

Isotype:

IgG

Immunogen Catalog Number:

AG30047

GenBank Accession Number:

NM_033089

GeneID (NCBI):

85364

UNIPROT ID:

Q9NUD5

Full Name:

zinc finger, CCHC domain containing

3

Calculated MW:

44 kDa

Observed MW:

43-45 kDa

Purification Method:

Protein A purification

CloneNo.:

250088G1

Applications

Tested Applications:

WB, Cytometric bead array, Indirect ELISA

Species Specificity:

human

Background Information

Storage

Storage:

Store at -80°C.

The product is shipped with ice packs. Upon receipt, store it immediately at -80°C

Storage Buffer:

PBS only, pH7.3

For technical support and original validation data for this product please contact:

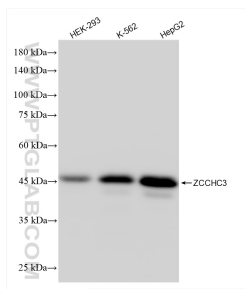
T: 4006900926

E: Proteintech-CN@ptglab.com

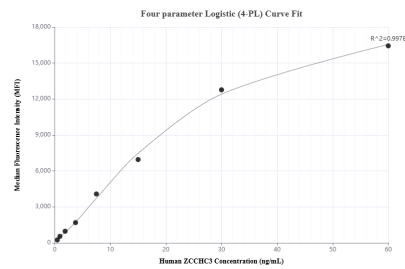
W: ptgcn.com

This product is exclusively available under Proteintech Group brand and is not available to purchase from any other manufacturer.

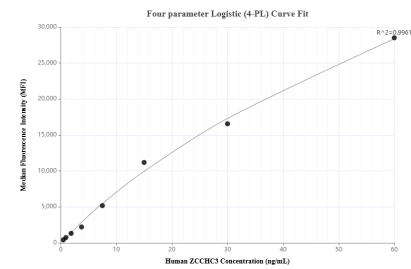
Selected Validation Data



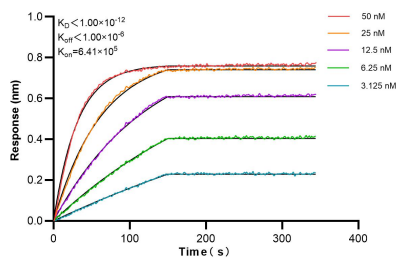
Various lysates were subjected to SDS PAGE followed by western blot with 85721-3-RR (ZCCHC3 antibody) at dilution of 1:5000 incubated at room temperature for 1.5 hours. This data was developed using the same antibody clone with 85721-3-PBS in a different storage buffer formulation.



Cytometric bead array standard curve of MP02096-2, ZCCHC3 Recombinant Matched Antibody Pair, PBS Only. Capture antibody: 85721-3-PBS. Detection antibody: 85721-2-PBS. Standard: Ag30047. Range: 0.469-60 ng/mL.



Cytometric bead array standard curve of MP02096-1, ZCCHC3 Recombinant Matched Antibody Pair, PBS Only. Capture antibody: 85721-3-PBS. Detection antibody: 85721-1-PBS. Standard: Ag30047. Range: 0.469-60 ng/mL.



Biolayer interferometry (BLI) kinetic assays of 85721-3-RR against Human ZCCHC3 were performed. The affinity constant is below 1 pM.