

For Research Use Only

# C1QA Recombinant antibody

Catalog Number: 85719-5-RR



## Basic Information

Catalog Number:

85719-5-RR

Concentration:

1000 µg/ml

Source:

Rabbit

Isotype:

IgG

Immunogen Catalog Number:

EG2396

GenBank Accession Number:

NM\_015991.4

GeneID (NCBI):

712

UNIPROT ID:

P02745

Full Name:

complement component 1, q  
subcomponent, A chain

Calculated MW:

26kDa

Observed MW:

26-30 kDa

Purification Method:

Protein A purification

CloneNo.:

250093B5

Recommended Dilutions:

WB 1:5000-1:50000

## Applications

Tested Applications:

WB, ELISA

Species Specificity:

human

Positive Controls:

WB : human plasma,

## Background Information

The first component of complement, C1, is a calcium-dependent complex of the 3 subcomponents C1q, C1r, and C1s. C1q is composed of 18 polypeptide chains: six A-chains, six B-chains, and six C-chains. Each chain contains a collagen-like region located near the N terminus and a C-terminal globular region. Deficiency of C1q has been associated with lupus erythematosus and glomerulonephritis. This antibody is raised against C1qA which is the A-chain polypeptide of human complement subcomponent C1q.

## Storage

Storage:

Store at -20°C. Stable for one year after shipment.

Storage Buffer:

PBS with 0.02% sodium azide and 50% glycerol, pH7.3

Aliquoting is unnecessary for -20°C storage

For technical support and original validation data for this product please contact:

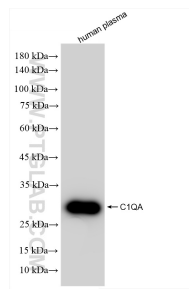
T: 4006900926

E: [Proteintech-CN@ptglab.com](mailto:Proteintech-CN@ptglab.com)

W: [ptgcn.com](http://ptgcn.com)

This product is exclusively available under Proteintech Group brand and is not available to purchase from any other manufacturer.

## Selected Validation Data



Various lysates were subjected to SDS PAGE followed by western blot with 85719-5-RR (C1QA antibody) at dilution of 1:10000 incubated at room temperature for 1.5 hours.