

For Research Use Only

# CLEC3B Recombinant antibody, PBS Only (Capture)

Catalog Number: 85689-3-PBS



## Basic Information

Catalog Number:

85689-3-PBS

Concentration:

1 mg/ml

Source:

Rabbit

Isotype:

IgG

GenBank Accession Number:

NM\_003278.2

GeneID (NCBI):

7123

UNIPROT ID:

P05452

Full Name:

C-type lectin domain family 3, member B

Calculated MW:

23 kDa

Purification Method:

Protein A purification

CloneNo.:

243017A3

## Applications

Tested Applications:

Cytometric bead array, Sandwich ELISA, Indirect ELISA, Sample test

Species Specificity:

human

## Background Information

### Storage

Storage:

Store at -80°C.

The product is shipped with ice packs. Upon receipt, store it immediately at -80°C

Storage Buffer:

PBS Only

For technical support and original validation data for this product please contact:

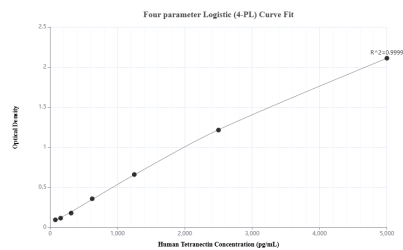
T: 4006900926

E: [Proteintech-CN@ptglab.com](mailto:Proteintech-CN@ptglab.com)

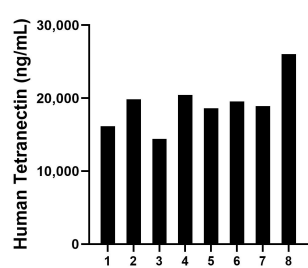
W: [ptgcn.com](http://ptgcn.com)

This product is exclusively available under Proteintech Group brand and is not available to purchase from any other manufacturer.

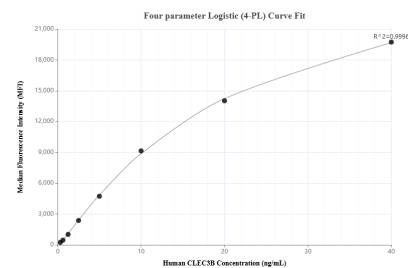
## Selected Validation Data



Sandwich ELISA standard curve of MP02030-3, Human Tetranectin Recombinant Matched Antibody Pair - PBS only. 85689-3-PBS was coated to a plate as the capture antibody and incubated with serial dilutions of standard Eg3063. 85689-4-PBS was HRP conjugated as the detection antibody. Range: 78.1-5000 pg/mL



Serum of eight individual healthy human donors was measured. The human Tetranectin concentration of detected samples was determined to be 19,241.86 ng/mL with a range of 14,408.67 - 26,154.19 ng/mL



Cytometric bead array standard curve of MP02030-2, Tetranectin Recombinant Matched Antibody Pair, PBS Only. Capture antibody: 85689-3-PBS. Detection antibody: 85689-2-PBS. Standard: Eg3063. Range: 0.313-40 ng/mL