

For Research Use Only

# RPL10A Recombinant antibody

Catalog Number: 85685-1-RR



## Basic Information

### Catalog Number:

85685-1-RR

### Concentration:

1000 µg/ml

### Source:

Rabbit

### Isotype:

IgG

### Immunogen Catalog Number:

AG10009

### GenBank Accession Number:

BC006791

### GeneID (NCBI):

4736

### UNIPROT ID:

P62906

### Full Name:

ribosomal protein L10a

### Calculated MW:

25 kDa

### Observed MW:

25 kDa

### Purification Method:

Protein A purification

### CloneNo.:

243031C10

### Recommended Dilutions:

WB 1:5000-1:50000

IF/ICC 1:200-1:800

## Applications

### Tested Applications:

WB, IF/ICC, ELISA

### Species Specificity:

human, mouse, rat

### Positive Controls:

WB : K-562 cells, Jurkat cells, HepG2 cells, HeLa cells, mouse spleen tissue, rat spleen tissue, fetal human brain tissue

IF/ICC : HepG2 cells,

## Background Information

RPL10A (Ribosomal Protein L10a) is a component of the 60S subunit of the ribosome and belongs to the L1P family of ribosomal proteins. It is located in the cytoplasm. RPL10A is ubiquitously expressed in various tissues, it plays a crucial role in ribosome biogenesis and protein synthesis. In addition to its role in protein synthesis, RPL10A has been implicated in cell proliferation, embryogenesis, and organogenesis. PMID: 29953919

## Storage

### Storage:

Store at -20°C. Stable for one year after shipment.

### Storage Buffer:

PBS with 0.02% sodium azide and 50% glycerol pH 7.3.

Aliquoting is unnecessary for -20°C storage

For technical support and original validation data for this product please contact:

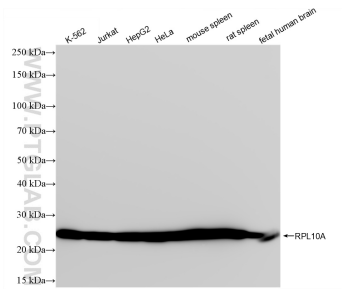
T: 4006900926

E: [Proteintech-CN@ptglab.com](mailto:Proteintech-CN@ptglab.com)

W: [ptgcn.com](http://ptgcn.com)

This product is exclusively available under Proteintech Group brand and is not available to purchase from any other manufacturer.

## Selected Validation Data



Immunofluorescent analysis of (-20°C Ethanol) fixed HepG2 cells using RPL10A antibody (85685-1-RR, Clone: 243031C10 ) at dilution of 1:400 and CoraLite® 488-Conjugated Goat Anti-Rabbit IgG(H+L) (SA00013-2).

Various lysates were subjected to SDS PAGE followed by western blot with 85685-1-RR (RPL10A antibody) at dilution of 1:10000 incubated at room temperature for 1.5 hours.